

# INSPIRING JEWISH COMMUNITY

A GUIDE TO THE PROGRAMS AND SERVICES THAT MAKE  
JEWISH BALTIMORE A GREAT PLACE TO LIVE, WORK AND PLAY.

THERE'S MORE TO EXPLORE ONLINE AT [ASSOCIATED.ORG](http://ASSOCIATED.ORG).

# Table of Contents

4 Uniting Jewish Baltimore

6 20s & 30s

10 Advocacy & Community Building

12 Families with Young Children

15 Hands-on Volunteering

18 Israel & Overseas

20 Jewish Learning & Connections

23 Professionals

25 Seniors (55+)

28 Special Needs

31 Support Services

34 Teens

37 Women

39 Ways to Give

40 Spend Your Weekend in Jewish Baltimore

42 Agencies & Programs

## WELCOME TO INSPIRING JEWISH BALTIMORE, YOUR GUIDE TO INVOLVEMENT AND RESOURCES IN THE JEWISH COMMUNITY, BROUGHT TO YOU BY THE ASSOCIATED: JEWISH COMMUNITY FEDERATION OF BALTIMORE.

Throughout this publication, you'll find the programs and services that make up Jewish Baltimore as well as stories of community members just like you – illustrating different paths to involvement and windows of opportunity to participate in Jewish life.

**What's in store for you this year?** Do you want to mix and mingle with other Jewish families or singles? Do you want to enrich your understanding of Jewish tradition? Are you interested in helping other community members? Or are you looking for ways to deepen family bonds?

**Lead a life connected to our community.** Network with other professionals in your industry at happy hours across town. Build relationships with people overseas and discover the bonds that hold us together. You can do all of that – and more! – right here. *Inspiring Jewish Baltimore* is here to guide you on that journey.

## WE HOPE THAT YOU FIND A WAY TO BECOME (OR STAY) INVOLVED IN JEWISH LIFE, HERE IN BALTIMORE AND BEYOND.

If you're not sure where to start, we're here to help! Give us a call at 410-727-4828 or email us at [information@associated.org](mailto:information@associated.org).

**Thanks for reading! We hope to see you soon.**



# Uniting Jewish Baltimore

## Take Jewish Baltimore on the go.

LIKE, TWEET, SHARE AND POST.  
Connect with us on social media to gain access to all things #JewishBaltimore – with just the push of a button or the swipe of a finger.

FACEBOOK.COM/THEASSOCIATED

@THEASSOCIATED



YOUTUBE.COM/JEWISHBALTIMORE



ASSOCIATED.ORG



@JEWISHBALTIMORE



THE ASSOCIATED:  
JEWISH COMMUNITY FEDERATION  
OF BALTIMORE

### WHAT EXACTLY DO YOU DO?

That's a common question at The Associated: Jewish Community Federation of Baltimore.

**The short answer is: we do quite a lot.**

We are 25 agencies and programs that make up our community in Baltimore as well as communities in Israel and around the world. We create community in Baltimore. We feed the hungry. We shelter the homeless. We educate our children for a lasting future. We protect the defenseless – so they know that they are not alone. We create positive Jewish identities – from baby to bubbe. Together, with you, we do all of this – and so much more.

The Associated is Jewish philanthropy in Baltimore. We function as the fundraising arm for most of the Jewish organizations that serve our community, both locally and abroad. We identify the needs of our community – all to build a strong tomorrow for future generations.

Our Annual Campaign brings together the community to accomplish this very important mission. Each year, with the help of hundreds of volunteers and thousands of generous donors, we raise more than \$30 million. By building community, developing leaders and planning for the next generation, we strive to do the most good – not only for right here in Jewish Baltimore, but also for Jews around the world.

Whether you are looking for long-term involvement, occasional opportunities or a one-time experience, there is something for everyone. Join us and get connected to Jewish Baltimore!

### OUR MISSION

*The Associated: Jewish Community Federation of Baltimore strengthens and nurtures Jewish life by engaging and supporting community partners in Greater Baltimore, Israel and around the world.*

### OUR VISION

*The Associated will secure the resources necessary to address the evolving landscape of Jewish life, ensuring a vibrant community for future generations.*

# 20s & 30s



**The place for you to grow your career – or to make an impact – is right here in Jewish Baltimore.**

Hang out at a social gathering, meet new people at a networking event or discover something new through a life-changing trip to Israel. No matter the life stage, you can join other young Baltimoreans who are traveling on their Jewish journeys together.

[associated.org/20s30s](http://associated.org/20s30s)

## YOUNG LEADERSHIP COUNCIL (YLC)

THE ASSOCIATED

[associated.org/20s30s/ylc](http://associated.org/20s30s/ylc)

YLC is a two-year leadership development program that engages young adults, ages 22 to 39, who aspire to hold key positions within The Associated and the Baltimore Jewish community. Through educational and fundraising programs, community service projects and agency board observation experiences, participants gain an array of leadership skills and develop an understanding of The Associated, Baltimore's Jewish community and the importance of philanthropy. YLC is offered every other year; recruitment will begin in the spring of 2017.

## CHARM CITY TRIBE

JEWISH COMMUNITY CENTER (JCC)

[jcc.org/charmcitytribe](http://jcc.org/charmcitytribe)

New to town or ready to tap in to Jewish Baltimore? Charm City Tribe seeks to build community among young adults in their 20s and 30s, living in downtown Baltimore, who want to discover Jewish culture in creative ways. They provide an entry point to meet other young adults interested in being part of a diverse and open Jewish community.

## JDC ENTWINE

THE ASSOCIATED

[associated.org/globaltravel](http://associated.org/globaltravel)

Explore Jewish communities around the world with JDC Entwine, a one-of-a-kind travel experience for young professionals seeking to make a meaningful impact on global Jewish needs and international humanitarian issues. Partner of the Associated, The American Joint Distribution Committee (JDC) is the world's leading Jewish humanitarian organization impacting people in more than 70 countries.

## YOUNG PROS COUNTERING BDS

THE ASSOCIATED AND BALTIMORE JEWISH COUNCIL (BJC)

[associated.org/experienceisrael](http://associated.org/experienceisrael)

Young Pros Countering BDS is a multi-session series of workshops and speakers for young adults to learn techniques to combat the Boycott, Divestment and Sanctions movement and become better-informed, stronger advocates for Israel and the Jewish people.



Get events for young adults sent right to your inbox. Sign up at: [associated.org/stayintouch](http://associated.org/stayintouch)

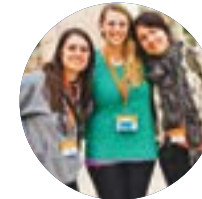
## BALTIMORE ONWARD ISRAEL

THE ASSOCIATED

[associated.org/experienceisrael](http://associated.org/experienceisrael)

Immerse yourself in Israeli culture while developing your professional future.

Onward Israel is a personalized eight-week summer internship program subsidized by The Associated's Israel Engagement Center. Join a select cohort of college students and recent graduates from Baltimore to live like a local in Tel Aviv while receiving a high-level internship experience.



## CONVERSATIONS HAPPENING AROUND TOWN (CHAT)

THE ASSOCIATED

[associated.org/20s30s/chat](http://associated.org/20s30s/chat)

Explore the Baltimore Jewish community, contemporary issues and your Jewish identity in small neighborhood groups. Hosted in a home of your peers, this multi-session program offers opportunities for you to make an impact within Jewish Baltimore and beyond.

## IFIKNEW

JEWISH COMMUNITY SERVICES (JCS)

[ifknew.org](http://ifknew.org)

ifknew is a program for young adults that uses a multi-media approach, including social media and in-person programs, to address the contemporary issues that can impact the well-being, self-image, careers and relationships of people in their 20s and 30s.

## LEADERSHIP DEVELOPMENT PROGRAM (LDP)

BALTIMORE JEWISH COUNCIL (BJC)

[baltjc.org](http://baltjc.org)

Participants meet with government officials and community leaders who address local, national and international issues, in order to develop an understanding of all aspects of Jewish community relations and public

affairs. Jewish individuals of different backgrounds, ages and interests are encouraged to apply. LDP is a one-year commitment with monthly sessions.

## MASA ISRAEL

THE ASSOCIATED

[associated.org/experienceisrael](http://associated.org/experienceisrael)

Masa Israel offers a variety of long-term immersive Israel experiences for young adults, ages 18 to 30. Whether you are looking to take a gap year, study abroad, volunteer, intern or teach English post-college, there are more than 200 programs to meet your personal needs.



## TAGLIT-BIRTHRIGHT ISRAEL

THE ASSOCIATED

[associated.org/experienceisrael](http://associated.org/experienceisrael)

Birthright Israel provides the gift of a free 10-day trip to Israel for Jewish young adults from across the world, ages 18 to 26, to travel with peers and explore remarkable sites of historic, cultural and religious significance.



## PLANNED GIVING ROUND TABLE (PGRT) FOR YOUNG PROFESSIONALS

THE ASSOCIATED

[associated.org/pgrtyoungprofessionals](http://associated.org/pgrtyoungprofessionals)

PGRT for Young Professionals involves intimate study groups which provide professionals with both the technical planned giving tools and the skills necessary to start a conversation around values with clients.

## POLITICALLY CONNECT

BALTIMORE JEWISH COUNCIL (BJC)

[baltjc.org/politically-connect](http://baltjc.org/politically-connect)

Politically Connect offers exciting opportunities for adults ages 22 to 45 to meet and mingle with prominent elected officials and national political experts to learn about and participate in the political process. Politically Connect has evening or early morning programs two to four times per year.

## REPAIR THE WORLD

JEWISH VOLUNTEER CONNECTION (JVC)

[jvcbaltimore.org/jvc-programs](http://jvcbaltimore.org/jvc-programs)

Take action and make change through meaningful, hands-on volunteer service. If you have a passion for social justice and an interest in meeting your peers with similar interests, join today!

## Make an IMPACT

THE ASSOCIATED

IMPACT, the young adult division of The Associated, inspires Jewish adults, ages 22 to 39, through fundraising, volunteering and leadership development programs. Men and women from many backgrounds, with diverse interests and talents, explore their Jewish journeys in Baltimore together through IMPACT. Programs range from fundraising to leadership development to social and beyond, where you can meet and mingle in a welcoming environment.

[ASSOCIATED.ORG/20s30s](http://ASSOCIATED.ORG/20s30s)

# Begin your Jewish Baltimore journey with IMPACT



## TAYLOR GONZALEZ: EDUCATION ADVOCATE AND BALTIMORE NEWBIE

### ON HER FAVORITE THING ABOUT ISRAEL:

"Aside from the falafel and Bamba snacks? **I love the culture, our history, being home.** There's an ambiance when you step off the plane and you're welcomed home – it's hard to put this feeling into words. My *abuelo* (grandfather) boarded the Altalena at 17 to fight in the Independence War of '48, and he felt this intrinsic feeling and yearning for Israel. I don't think I can choose just one favorite tangible thing – but being home is my absolute favorite thing about Israel."



## JON YOFFE: LAWYER AND NEW DAD

### ON THE BEST PART ABOUT IMPACT:

"Whether you're Reform, Orthodox or somewhere in between, **IMPACT is about promoting and supporting our community.** There are many young people in the organization who are not that observant, but still feel a strong connection to this community and their roots. [My wife Marni and I] love how IMPACT and The Associated strive to be inclusive of all the various sects of our Jewish community. It makes us stronger as a whole."



## HELENE KAHN: COMMUNITY ADVOCATE AND BALTIMORE AFICIONADO

### ON WHY SHE LOVES OUR COMMUNITY:

"We're very lucky in Baltimore. It's easy to take the Jewish community for granted, especially if you grew up here... In smaller towns, you need to make more of an effort. The Associated offers so many opportunities, whether you care about helping the vulnerable or providing social services. **You get to feel the impact you are having.** It's also a great place to be part of a networked community, professionally and socially."



## JULIE BLUMENFELD: DENTIST AND DEVOTED MOM

### ON WHY SHE GIVES BACK:

"The importance of taking an active role in my community was ingrained in me from a very young age. Growing up in Savannah, GA, my friends and I would participate in [the Savannah] Federation's 'Trading Places' program. The program paired up volunteers with organizations needing help on the holiday so that non-Jewish employees and regular volunteers could spend the day with their families ... I truly believe in the importance of empowering other young adults to get involved. **I want to help the young adult population realize the importance of philanthropy and leadership** and how vital they are to ensuring our future."



## JEFF SADRI: LAWYER AND FACULTY MEMBER AT THE UNIVERSITY OF BALTIMORE

### ON LONG-LASTING FRIENDSHIPS:

"Although Birthright Israel only lasted 10 days, the friendships I have developed with people on the trip will be everlasting; those of us who live in the Mid-Atlantic region have been regularly getting together! **The bond between us is unique** and I am truly fortunate to have had the opportunity to embark on an unforgettable journey."



## DOV HOFFMAN: MARKETER AND VOLUNTEER

### ON EFFECTING CHANGE:

"My most meaningful Young Leadership Council (YLC) experience to date has been my observation of Towson Hillel. As an alumna of the university, it is rewarding to help establish and develop a strategy for the Jewish Tigers Alumni Alliance (JTAA), a Jewish alumni alliance collaborating with the university. I'm thankful that YLC has provided me the opportunity to **cultivate a strong Jewish alumni network in the area and beyond,** while building a foundation for future Jewish graduates of the university."

You just graduated college. The road ahead has never been more uncertain, but one thing you're sure of is your need for a connection. You're ready for a change of pace career-wise. You know that you'll stand out among a pool of applicants if you make professional connections. You have a new baby. Being a parent is the most rewarding job you could have, but you're looking for another couple, or parent, who is experiencing the same joys and challenges of raising a child.

Whatever the life stage you're in, you have a place in Jewish Baltimore with IMPACT, the young adult division (ages 22 to 39) of The Associated. We host social happy hours, volunteer days to give back, professional networking events, philanthropic opportunities, young family programming and so much more.

Baltimoreans are the backbone for our strong and cohesive community. Here are a few faces of IMPACT, the people who give back, love Israel, enjoy the camaraderie in our neighborhoods and take our community to greater heights.

# Advocacy Community & Building



**Your voice holds power – know when and how to use it.** Start a conversation with your neighbors about supporting one another, speak to elected officials about your social concerns or learn about the issues that affect the quality of life here in Baltimore.

[associated.org/getinvolved](http://associated.org/getinvolved)

## HAШ BALTIMORE THE ASSOCIATED

[associated.org/rsjbaltimore](http://associated.org/rsjbaltimore)

Connect with your Jewish roots and the Baltimore and global Jewish community. HaШ Baltimore is a Russian-speaking Jewish Baltimore initiative that gives voice to members of the Russian-speaking Jewish community through volunteerism, leadership development and philanthropy.

## NEW COMMUNITY ENGAGEMENT

CHAI: COMPREHENSIVE HOUSING ASSISTANCE, INC.

[chaibaltimore.org/communityorganizing](http://chaibaltimore.org/communityorganizing)

CHAI helps Baltimore's northwest neighborhoods foster community organization by working closely with residents and neighborhood associations, offering help with leadership development, member recruitment and community projects like block beautification projects, neighborhood gatherings and community events.

## COMMUNITY SUSTAINABILITY INITIATIVE

PEARLSTONE CENTER

[pearlstonecenter.org/sustainability](http://pearlstonecenter.org/sustainability)

Pearlstone's Community Sustainability department empowers local Jewish organizations, individuals and families to practice sustainability through energy efficiency, water conservation and more. Pearlstone offers Green Loans for sustainable projects and assistance in making schools and other insitutions green.

## NEW FALLSTAFF MULTICULTURAL NEIGHBORHOOD ORGANIZING PROJECT

CHAI:  
COMPREHENSIVE  
HOUSING  
ASSISTANCE, INC.

410-500-5300

CHAI, in partnership with Casa de Maryland, celebrates the multicultural make-up of the Fallstaff neighborhood, by offering community conversation round tables, multi-cultural social gatherings and more. All materials are available in both English and Spanish to ensure neighborhood inclusion.



## INTERETHNIC AND INTERFAITH DIALOGUES

BALTIMORE JEWISH  
COUNCIL (BJC)

[baltjc.org/  
interethnic-and-  
interfaith-dialogues](http://baltjc.org/interethnic-and-interfaith-dialogues)

BJC's interethnic and interfaith dialogues were formed to maintain positive relationships between the Baltimore Jewish community and others in the region. Through dialogue, BJC focuses on working against anti-Semitism and prejudice in partnership with those who reside in the community in which we live. With the dialogues, you can share your thoughts and build relationships with your neighbors.



## PIKESVILLE SCHOOLS INITIATIVE

CHAI: COMPREHENSIVE HOUSING  
ASSISTANCE, INC.

[chaibaltimore.org](http://chaibaltimore.org)

The Pikesville Schools Initiative strengthens public schools in Pikesville in order to provide excellent educational options for neighborhood residents. Through marketing, parent/teacher organizations, increased educational and enrichment programming and fundraising support, the schools are better equipped to provide their students with a stellar education. Volunteers and parents are needed to tutor, read to students and get involved in advocacy to support our schools.

# We build community by creating partners.

The Associated, together with its community partners such as Baltimore Jewish Council (BJC), CHAI: Comprehensive Housing Assistance, Inc., CHANA and many more, work tirelessly to ensure the safety and cohesion of our thriving community.

## HERE'S A SAMPLE OF WHAT WE ACCOMPLISH:



### OUR CHILDREN READ AND LEARN TOGETHER.

3,000 Jewish children's books are delivered each month – for free! – to families in the Greater Baltimore area.

### OUR OLDER ADULTS CAN AGE IN PLACE WITH DIGNITY.

Each year, we provide more than 690 rides – to the grocery store, doctors' appointments and more – to seniors who can't drive. Plus, we make housing affordable to more than 1,600 seniors.



### OUR ABUSED AND DEFENSELESS HAVE A VOICE.

On average, we advocate with and on behalf of 150 survivors of interpersonal violence each year.

### OUR VULNERABLE GET THE HELP THAT THEY REQUIRE.

Each year, we assist those who are struggling financially by distributing funds to more than 1,450 individuals.



# Families with Young Children



**It's been some time since your bar or bat mitzvah; now you're thinking about your child's.** Thankfully, you've come to the right place for putting Jewish values into your family life. Through parenting, education and recreational programs to hands-on volunteering opportunities, join our community to learn, grow and give back – together.

[associated.org/families](http://associated.org/families)

## THE CENTER FOR JEWISH CAMPING

THE ASSOCIATED  
[livecamp.org](http://livecamp.org)

On top of fun, friendships and lifelong memories, the right summer camp can provide a transformative Jewish experience for your child. With 10 local partner camps and more than 150 options around the country, you need a trustworthy source of comprehensive information to choose the right camp. The Center for Jewish Camping is here to help!

## FAMILY FARM DAYS

PEARLSTONE CENTER  
[pearlstonecenter.org/family-farm-days](http://pearlstonecenter.org/family-farm-days)

Join Pearlstone for monthly Family Farm Days, full of fun, farming and festivities! Each month a new Jewish environmental theme is explored and you can learn skills to practice at home. Visit the animals in the pasture and explore the farm's bounty. Healthy snacks, PJ Library story time and hands-on activities make Family Farm Days a great way to spend a Sunday afternoon.

## GOT SHABBAT

JEWISH COMMUNITY CENTER (JCC)  
[jcc.org/gotshabbat](http://jcc.org/gotshabbat)

Families with young children are invited to join the J for this monthly community Shabbat celebration held in partnership with area synagogues and local Jewish agencies. You'll connect with other parents and youngsters from the Jewish community while participating in family-friendly Shabbat services and fun activities for children and adults.

## JEWISH BIG BROTHER BIG SISTER

JEWISH COMMUNITY SERVICES (JCS)  
[jcsbaltimore.org/jewish-big-brother-big-sister](http://jcsbaltimore.org/jewish-big-brother-big-sister)

Sometimes a child could use a little extra support from a caring adult acting as a mentor and a friend. The Jewish Big Brother Big Sister program matches adult volunteers with Jewish children who need mentoring, including those from single-parent families or families where a member is ill.



Want upcoming family programs sent right to your inbox? Sign up: [associated.org/stayintouch](http://associated.org/stayintouch)

## AFTER SCHOOL CARE JEWISH COMMUNITY CENTER (JCC)

[jcc.org/kidscenter](http://jcc.org/kidscenter)

Kids Center, the JCC's after school program, promotes your child's social, emotional, cognitive and physical development. Staff encourages character building and teamwork through a comprehensive curriculum that includes homework help, fitness and outdoor activities, games, art, volunteer projects and enrichment classes.



## AHAVA BABY

MACKS CENTER FOR JEWISH EDUCATION (CJE)

[cjebaltimore.org/ahava-baby](http://cjebaltimore.org/ahava-baby)

Are you a new parent? Then Ahava Baby is for you and your family! Ahava Baby's programming is fun, neighborhood-based and where you can meet others at a similar life stage.

## BABIES, BOOKS AND BAGELS

MACKS CENTER FOR JEWISH EDUCATION (CJE)

[410-735-5000](tel:410-735-5000)

Enjoy growing together with community and your baby throughout the year with Babies, Books and Bagels, a partnership program between the JCC and CJE. For children through 16 months.



## CHILDREN'S THEATER PRODUCTION COMPANY

JEWISH COMMUNITY CENTER (JCC)  
[jcc.org/childrenstheater](http://jcc.org/childrenstheater)

Children's Theater Production Company helps children in grades one through eight develop imagination, concentration, character, professionalism and technique, while also strengthening command of their body and voice. It offers the perfect dynamic experience for the beginner, who is exploring acting, or the more seasoned actor, who is looking to gain more experience from trained professionals.

## CULTURE CLUB

JEWISH COMMUNITY CENTER (JCC)

[jcc.org/cultureclub](http://jcc.org/cultureclub)

Each month, the JCC partners with Baltimore's top arts organizations to offer children in grades one through five the opportunity to experience the wonderful world of visual and performing arts – through music, dance, visual arts, culinary arts and more.

## FAMILY FARM CAMP

PEARLSTONE CENTER

[pearlstonecenter.org/family-camp](http://pearlstonecenter.org/family-camp)

Every summer, enjoy an unforgettable five-day experience at this overnight family camp in Pearlstone Center's beautiful natural setting. Participate in family programming for children of all ages as well as adult learning in sustainable agriculture, ecology and Judaism. Partake in nature crafts, farm activities and campfires, while meeting and building community with other young Jewish families.



## PJ Library

MACKS CENTER FOR JEWISH EDUCATION (CJE)

PJ Library sends free Jewish books and music on a monthly basis to children from age six months through eight years in Baltimore City and Baltimore County. Not only do families get a book, but also are connected to a community of PJ Library families through newsletters and programs.

### CAN'T GET ENOUGH PJ?

PJ on the Town offers events for families across cultural institutions throughout Baltimore, so you can find out what's Jewish around town and connect with other families. PJ Our Way extends the PJ Library program to children ages nine through 11 with books and an online community. PJ ABC connects Baltimore families to families in Ashkelon, our sister city in Israel.



### THERE'S EVEN MORE PJ AROUND TOWN WITH PJ POP UPS

Find PJ Library at Trader Joe's, the local farmer's market and other Baltimore locations for pop-up stories and crafts.

[CJBALTIMORE.ORG/PJ](http://CJBALTIMORE.ORG/PJ)

## Families with Young Children

### J TOWN

MACKS CENTER FOR JEWISH EDUCATION (CJE) & JEWISH COMMUNITY CENTER (JCC)

[jcc.org/jtown](http://jcc.org/jtown)

There is something for everyone at J Town – an awesome play space at the Weinberg Park Heights JCC where everyone is a kid. Families with young children are invited to explore our mini town – complete with a baby garden, stage and costumes, a Jewish home, pet store, bagel shop and more. Play dress up, explore the real PJ Library, take care of “pets” and “work” at the grocery store. Check online for a calendar of events.



### MACKS CENTER FOR JEWISH EDUCATION LIBRARY

MACKS CENTER FOR JEWISH EDUCATION (CJE)

[cjebaltimore.org/library](http://cjebaltimore.org/library)

Visitors to the CJE have access to their wonderful lending library of books, CDs and DVDs. There are more than 10,000 resources for teachers and parents, as well as children’s books, including many PJ Library titles and books in Hebrew. JCC membership is not required; come browse and explore!

### SHALOM BABY

MACKS CENTER FOR JEWISH EDUCATION (CJE)

[cjebaltimore.org/shalom-baby](http://cjebaltimore.org/shalom-baby)

Shalom Baby offers childbirth education classes for expectant parents. The classes integrate traditional childbirth education with Jewish learning. Shalom Baby also enables expectant parents to connect with each other as they share this transformative stage of life.

### TOWSON UNIVERSITY COMMUNITY DANCE AT THE J

JEWISH COMMUNITY CENTER (JCC)

[jcc.org/dance](http://jcc.org/dance)

Youth ages three through 10 will learn jazz, tap, ballet and more from the renowned faculty and highly-trained instructors of Towson University Community Dance (TUCD). Accredited by the National Association of Schools of Dance (NASD), the TUCD program promotes an appreciation of the aesthetics of dance as an art form.



# Hands-on Volunteering



### START OR JOIN A VOLUNTEAM

JEWISH VOLUNTEER CONNECTION (JVC)

[jvcbaltimore.org/volunteams](http://jvcbaltimore.org/volunteams)

Want to make a difference in the community but not sure where to start or how much time you can commit? Create a VolunTeam with your friends and family, or join one already in existence. Discover how volunteering can be flexible, fun and meet vital community needs. Each VolunTeam adopts a project and members have flexibility in deciding how often they volunteer. Current VolunTeam projects serve individuals with special needs, public school students, the environment, homeless individuals, seniors and more. JVC can help identify the right volunteer project for you!

### JEWISH BIG BROTHER BIG SISTER

JEWISH COMMUNITY SERVICES (JCS)

[jcsbaltimore.org/change-a-childs-life](http://jcsbaltimore.org/change-a-childs-life)

Right now, there are children in our community who need a mentor and a friend. Experience the joy of making a difference in a young person’s life by becoming a Jewish Big Brother or Big Sister. A “Big” acts as a special friend to a “Little” by offering support and guidance, being a positive role model and doing activities together. It only takes a few hours, two to three times a month. Training and support are provided.

### ANNUAL DAYS OF SERVICE: GIVE BACK

JEWISH VOLUNTEER CONNECTION (JVC)

[jvcbaltimore.org/annual-events](http://jvcbaltimore.org/annual-events)

Infuse the volunteer spirit throughout your year. Assemble care packages; participate in *mitzvah* projects; beautify the community; and serve in soup kitchens, homeless shelters, senior facilities and more. You can choose to volunteer and help others – putting into practice the simple idea that every single person can do something good. Four annual events are coordinated each year: Day to Unite with Governor’s Day to Serve (mid-September); Mitzvah Day (December 25); MLK Day of Service (mid-January); and Good Deeds Day (early April).

## Baby & Me at the JCC

JEWISH COMMUNITY CENTER (JCC)

Share, socialize and gain new skills at the J – for babies and parents alike! The JCC offers moms and moms-to-be a chance to connect, stay fit and interact with their little ones. Engage your kids with sensory, cognitive and gross motor development. Classes and workshops include:

**HELLO BABY** – for all new parents and their newborns;

**HAPPIEST BABY ON THE BLOCK** – how to soothe a crying newborn;

**SOCCER SHOTS** – teaching children soccer skills and how to use their feet;

**MOTHER’S CIRCLE** – for women of other religious backgrounds who are raising Jewish children;

**MUSIKGARTEN** – bringing the joy of music and movement to children;

**PRESCHOOL PREP** – for the transition from toddler to preschooler; and more!

Available in Owings Mills, Park Heights and Federal Hill.

[JCC.ORG/PARENTING](http://JCC.ORG/PARENTING)

We can all repair the world (*tikkun olam*) – one volunteer opportunity at a time. Put your Jewish values to work, create a sense of purpose and turn community concerns into action.

[associated.org/volunteers](http://associated.org/volunteers)



## ADOPT-A-NEIGHBOR

CHAI: COMPREHENSIVE HOUSING ASSISTANCE, INC.

[chaibaltimore.org/volunteer](http://chaibaltimore.org/volunteer)

Volunteers of all ages and skill levels are needed two to four times during the year to help the community's most vulnerable older adults through winterization of windows and yard maintenance. The greatest benefit of Adopt-a-Neighbor is companionship – establishing an ongoing connection with a neighbor.



## BOOKWORMS

JEWISH VOLUNTEER CONNECTION (JVC)

[jvcbaltimore.org/bookworms](http://jvcbaltimore.org/bookworms)

The Bookworms program provides an opportunity to volunteer once a month in area elementary schools. Volunteers read to children and provide new or gently-used books for classroom libraries.

## GORDON VOLUNTEER USHERS

JEWISH COMMUNITY CENTER (JCC)

[gordoncenter.com/volunteer](http://gordoncenter.com/volunteer)

Volunteers at the Gordon Center for Performing Arts will assist house management with collecting tickets, showing audience members to their seats, selling concessions and, most importantly, creating a pleasant and welcoming environment for the Gordon's patrons. As reward, volunteer ushers are able to watch the performance during their shift.

## HANDS-ON AT PEARLSTONE

PEARLSTONE CENTER

[pearlstonecenter.org/volunteer](http://pearlstonecenter.org/volunteer)

Pearlstone Center welcomes individuals interested in a unique and experiential hands-on volunteer opportunity. Volunteers typically assist in the animal pasture, on the farm and in the retreat center. Volunteers require no previous experience in agriculture, but rather an enthusiastic attitude, a love for the

outdoors and a willingness to get dirty. In addition to individual volunteers, Pearlstone offers high school and college internship opportunities that combine farm work with a more specialized area of focus. Volunteer opportunities for families, B'nai Mitzvah groups, corporate groups and service groups are available as well.

## JEWISH MUSEUM OF MARYLAND VOLUNTEERS

JEWISH MUSEUM OF MARYLAND AT THE HERBERT BEARMAN CAMPUS (JMM)

[jewishmuseummd.org/volunteering](http://jewishmuseummd.org/volunteering)

The JMM seeks volunteer docents, gift shop salespeople, receptionists and special events assistants. These positions engage volunteers in the Jewish art, culture and history of Maryland.



## PARTY WITH A PURPOSE

JEWISH VOLUNTEER CONNECTION (JVC)

[jvcbaltimore.org/partywithapurpose](http://jvcbaltimore.org/partywithapurpose)

Add some hands-on service to your next party, life cycle event or business gathering, and make it an experience your guests will never forget. Have fun while making a difference for community members in need. Volunteer projects can be created to fit certain themes and areas of interest. Examples of projects include making toys and treats for animals at a shelter, decorating magic wizard wands to brighten the spirits of pediatric hospital patients and making blankets for homeless residents of Baltimore.

## PRO-BONO SERVICES

JEWISH COMMUNITY SERVICES (JCS)

[jcsbaltimore.org/volunteer](http://jcsbaltimore.org/volunteer)

JCS needs community dentists to provide pro-bono dental care in their offices for low-income clients who are experiencing dental emergencies. In addition, lawyers are needed to volunteer their time providing pro-bono legal consultation at a monthly drop-in clinic for people with low income.

## THE REMIDA PROJECT

MACKS CENTER FOR JEWISH EDUCATION (CJE)

[cjebaltimore.org/remida](http://cjebaltimore.org/remida)

The REmida Project is a volunteer-run creative reuse center, offering teachers and parents a central source for repurposed materials that fosters learning and creativity. The REmida Project relies on donations of overruns, remnants, rejects and obsolete supplies of such items as clean mechanical and electronic parts, unused plastics, textiles, wire, tubing, hardware, piping and much more.



## RUSSIAN-SPEAKING TRANSLATORS

JEWISH COMMUNITY SERVICES (JCS)

[jcsbaltimore.org/volunteer/assist-new-americans](http://jcsbaltimore.org/volunteer/assist-new-americans)

JCS needs volunteers to accompany Russian-speaking clients to medical and other necessary appointments to provide translation and help in completing paperwork. Hours are flexible; mileage reimbursement is available.

## SCHOOL COMMUNITY PARTNERSHIP

CHAI: COMPREHENSIVE HOUSING ASSISTANCE, INC.

[chaibaltimore.org/community-resources/schools](http://chaibaltimore.org/community-resources/schools)

CHAI's School and Community Partnership Program supports the public schools in the Glen and Fallstaff neighborhoods of northwest Baltimore City, Fallstaff and Cross Country Elementary Middle Schools, by increasing access to financial and community resources to improve school infrastructure and academic outcomes, and deepens ties between the schools and their surrounding communities. CHAI works closely with principals, teachers, parents and community residents to assess school and student needs and to advocate for public funds, secure private funds, establish program partnerships and implement programs to address those needs.



# Why Volunteer?

We can all work to repair the world. The Jewish Volunteer Connection (JVC) coordinates hundreds of thousands of hours of service — an immeasurably important gift to the members of our community.

A FEW OF OUR STELLAR VOLUNTEERS EXPLAIN WHY THEY GIVE BACK:

"It is important to me and my husband, Matt, that **our children realize that they are fortunate** in that they have a nice home, warm clothes and food on the table, and that not everyone in the world is as lucky."

– LINDSAY KLATSKY, PARTY WITH A PURPOSE ORGANIZER

"Helping others gives one such a feeling of usefulness – a reason that **we have been put here not for ourselves alone.**"

– GERT LEVITAN, MITZVAH DAY PARTICIPANT

"The experience [with Diller Teen Fellows] has taught me how easy it is to **make a change within my community** and how effective one voice, no matter what the age, can be in impacting a group of people."

– LAUREN OFFERMANN, PAST BALTIMORE DILLER TEEN FELLOW

"[On Mitzvah Day,] I helped specifically to organize the winter care packages so they can be delivered to the different organizations ... If we fill 1,500 winter care packages, I know for a fact that I am touching at least 750 of these; therefore, 750 packages are going to these people who need help, and I am touching 750 people. By doing so, **I am contributing to a larger number.**"

– JIM SCHWARTZ, CHAIR OF MITZVAH DAY

"When I volunteer with Bookworms, **I get to share my love of reading.** I get smiles, laughs and even hugs from the kindergartners. A 2003 study showed that children from high-income families are exposed to 30 million more words than children from families on welfare. In just one hour per month, I get to expose the children I read with to more books, more words and a wider world."

– OCTAVIA SHULMAN, BOOKWORMS VOLUNTEER

# Israel & Overseas



Each year, thousands from Baltimore travel to Israel to share meals, adventures and meaningful experiences. And it's not just Israel. We're committed to *Klal Yisrael* (the link between Jewish people in Baltimore, Israel and around the world) – our collaborative initiatives build bridges and create a global community.

[associated.org/globalcommunity](https://associated.org/globalcommunity)

## BALTIMORE-ASHKELON BOOK CLUB

**MACKS CENTER FOR JEWISH EDUCATION (CJE)**  
[cjebaltimore.org/baltimore-ashkelon-book-club](https://cjebaltimore.org/baltimore-ashkelon-book-club)

The Baltimore-Ashkelon Book Club connects readers in both Baltimore and Ashkelon through the reading and discussion of books related to Israel, the Middle East and Jewish life. Open to all, the Book Club creates social and educational opportunities through informal settings that deepen the Baltimore-Ashkelon Partnership.

## BALTIMORE-ASHKELON PARTNERSHIP

**THE ASSOCIATED**  
[associated.org/baltimoreashkelon](https://associated.org/baltimoreashkelon)

Let the Baltimore-Ashkelon Partnership help you find your connection to Israel. Established in 2003, the Partnership has made meaningful and personal connections between the two cities a top priority. The Partnership is based on mutual values and vision and connects people in Baltimore to Israelis living in its sister city, Ashkelon.

## BALTIMORE ISRAEL COALITION

**BALTIMORE JEWISH COUNCIL (BJC)**  
[baltimoreisraelcoalition.org](https://baltimoreisraelcoalition.org)

The Baltimore Israel Coalition is a consortium of local organizations working to support Israel through education, advocacy and community-building. Programs include educational and advocacy trainings, missions to Capitol Hill and various other collaborative programs.

## BALTIMORE-ODESSA PARTNERSHIP

**THE ASSOCIATED**  
[associated.org/odessapartnership](https://associated.org/odessapartnership)

The Baltimore-Odesa Partnership offers unique opportunities for people-to-people connections between residents of Baltimore and its sister city, Odessa, through arts and culture, leadership development and Jewish identity, as well as educational programming.

## COMMUNITY FUND FOR ISRAEL EXPERIENCES

**MACKS CENTER FOR JEWISH EDUCATION (CJE)**

[cjebaltimore.org/cfie](https://cjebaltimore.org/cfie)

The Community Fund for Israel Experiences provides need-based scholarships to Baltimore City/County high school and first-year post-high school students traveling to Israel on an educationally-valid program.



## ISRAEL ADVOCACY AND AWARENESS PROGRAMS

**BALTIMORE JEWISH COUNCIL (BJC)**  
[baltjc.org/advocacy-and-awareness](https://baltjc.org/advocacy-and-awareness)

BJC educates, informs and raises awareness in the Jewish and general community about Israel. Through BJC, you can learn more about Israel and related global concerns, take action on behalf of a safe and secure Israel and get involved in the pursuit of lasting peace in the region.

## THE MARLENE AND STEWART GREENEBAUM VOLUNTEER CENTER IN ASHKELON

**THE ASSOCIATED & JEWISH VOLUNTEER CONNECTION (JVC)**

[associated.org/baltimoreashkelon/volunteer](https://associated.org/baltimoreashkelon/volunteer)

Founded in 2011, the Marlene and Stewart Greenebaum Volunteer Center in Ashkelon is the central address for volunteerism in Ashkelon, working with individuals, families and groups, including visitors from Baltimore. Volunteer on hands-on, engaging projects alongside Ashkelon residents to foster community and mutual support.

## SHEVET ACHIM

**MACKS CENTER FOR JEWISH EDUCATION (CJE)**

[cjebaltimore.org/shevet-achim](https://cjebaltimore.org/shevet-achim)

In collaboration with the Jewish Agency for Israel (JAFI), *Shevet Achim* pairs teachers and students at five Jewish schools in Baltimore and five Jewish schools in Ashkelon by providing a supportive structure and educational benchmarks that guide collaborative learning. The purpose of the program is to develop person-to-person relationships over a period of three years, as teachers guide students to deepen their connections to Israel, Judaism and the Jewish people.

## SHINSHINIM

**MACKS CENTER FOR JEWISH EDUCATION (CJE)**

[cjebaltimore.org/cjeshinshinim](https://cjebaltimore.org/cjeshinshinim)

The *Shinshinim* are two Israeli young adults who serve as informal educators infusing a special Israeli spirit (*ruach Yisralit*) into our community. Through programs and events, they ensure that Baltimore's youth and families benefit from a powerful exposure to Israel, Jewish identity and Ashkelon.

## TRAVEL WITH THE ASSOCIATED

**THE ASSOCIATED**

[associated.org/travel](https://associated.org/travel)

See Israel and other overseas Jewish communities with The Associated. Whether you are interested in a group experience or personal trip, The Associated can enhance your travel plans. Join a family trip, explore Israel's business culture with one of the professional network trips, connect with local Jews abroad on a women's or young adults' visit or plan a VIP experience for your own clan.



"Onward Israel seemed like an amazing opportunity to experience Israel like I'd never experienced it before."



**ALEXANDRA KADISH**  
 Baltimore Onward Israel participant, College Graduate

When I learned about The Associated's Baltimore Onward Israel program, an internship and immersive Israel experience, I was intrigued. I fell in love with Israel on previous trips, and the program seemed like an amazing opportunity to experience life in Tel Aviv, as a local.

I was placed at the Jaffa Institute, an organization that helps underserved children in Tel Aviv/Yafo and beyond. I assisted with grant writing, donor research and outreach. The internship offered a great deal of independence and I was encouraged to take on my own projects. I met fantastic people, was able to live in the most beautiful and resilient country in the world.

FOR YOUNG ADULT TRAVEL OPPORTUNITIES, VISIT PAGE 6

# Jewish Learning & Connections



Experience art, music, volunteerism, sustainability and more, all with a Jewish lens. By adding a Jewish connection to our lives, we can create a thriving Jewish community. Here, we can come together and learn from each other.

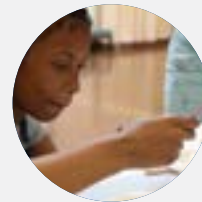
[associated.org/getinvolved](https://associated.org/getinvolved)

## JEWISH MUSEUM OF MARYLAND LEARNING OPPORTUNITIES

JEWISH MUSEUM OF MARYLAND AT THE HERBERT BEARMAN CAMPUS (JMM)

[jewishmuseummd.org/education](https://jewishmuseummd.org/education)

Visit the JMM and tour two historic synagogues and three exhibition galleries. Immerse yourself in Jewish heritage and culture. Research your family's genealogy in the family history center. Or, attend one of the museum's various programs and special events. Adults, families, students and teachers can enjoy a variety of fun and educational programs.



## PESACH AT PEARLSTONE

PEARLSTONE CENTER

[pearlstonecenter.org/pesach](https://pearlstonecenter.org/pesach)

Pesach at Pearlstone, a 10-day, nine-night Passover vacation experience, allows participants to feel comfortable, cared for and entertained – without having the cooking, cleaning or preparations that can make Passover feel overwhelming. Pearlstone offers an exciting selection of lectures, day camp for kids, fun social activities, game tournaments, on-site entertainment and *Chol HaMoed* day trips.

## MODERN HEBREW COURSES

BALTIMORE HEBREW INSTITUTE AT TOWSON UNIVERSITY (BHI)

[towson.edu/bhi](https://towson.edu/bhi)

BHI offers absolute beginner through advanced-level modern Hebrew courses in the Pikesville area. Study with experienced professional Israeli Hebrew educators. This non-credit adult education program teaches students to read, write and speak Hebrew.

## MACKS CENTER FOR JEWISH EDUCATION (CJE)

[cjebaltimore.org](https://cjebaltimore.org)

CJE promotes and facilitates lifelong learning that nurtures Jewish identity and strengthens Jewish community. The CJE offers creative, innovative and engaging Jewish learning experiences to nurture the mind and develop connections — regardless of age, background or affiliation.



## BALTIMORE HEBREW INSTITUTE AT TOWSON UNIVERSITY (BHI)

[towson.edu/bhi](https://towson.edu/bhi)

Towson University offers graduate programs in Jewish Studies and Leadership in Jewish Education and Communal Service, as well as special programs and networking opportunities. BHI supports scholarships for TU's Judaic Studies graduate students such as fellowships for Jewish communal professionals. They also offer adult education opportunities, including an extensive Hebrew language program, *Tzion* course, scholarly lectures, museum trips and film events. BHI hosts a Judaic library of more than 70,000 volumes at the Towson University Albert S. Cook Library.

## BEIT MIDRASH RETREAT

PEARLSTONE CENTER

[pearlstonecenter.org](https://pearlstonecenter.org)

Join Pearlstone for an immersive weekend exploration of Jewish texts through a contemporary lens.



Contemplate, discuss and grapple with ancient sources with timeless messages. Learn with and from leading teachers and rabbis in order to recall and reclaim land-based traditions.

## CHESAPEAKE TEVA

PEARLSTONE CENTER

[pearlstonecenter.org](https://pearlstonecenter.org)

This four-day overnight program is offered to regional Jewish schools with students in grades four through seven. Chesapeake TEVA provides students an opportunity to explore their responsibility as stewards of the Earth through a Jewish view. Whether learning about biodiversity from a rotting log, taking a fire-building elective or dramatizing the origins of their lunch before *Birkat Hamazon*, students are engrossed in a community that lives what it teaches.

## FIELD TRIPS, COMMUNITY EDUCATION, EXPERIENTIAL WORKSHOPS AND OVERNIGHT PROGRAMS

PEARLSTONE CENTER

[pearlstonecenter.org/community-education](https://pearlstonecenter.org/community-education)

Bring your class, congregation, staff or youth group on a field trip to Pearlstone Center for a day or overnight program of experiential learning on Pearlstone's Jewish educational farm. Programs engage all ages and backgrounds in experiential education focused on sustainability, agriculture, health, justice and Judaism. In addition, the ropes course offers both high and low elements as catalysts for team building, group bonding and meaningful challenges for both the individual and the group.

## HAKEREM

MACKS CENTER FOR JEWISH EDUCATION (CJE)

[cjebaltimore.org/hakerem](https://cjebaltimore.org/hakerem)

*HaKerem* is an educational resource store that provides Jewish-themed toys, games, stickers, flashcards and other items that can be purchased for use in the classroom or in the home. Plus, check out the 10,000 volume library and a recycled arts center.

## HILLEL: THE FOUNDATION FOR JEWISH CAMPUS LIFE

Goucher College | [goucher.edu/hillel](https://goucher.edu/hillel)  
Johns Hopkins University | [hopkinshillel.org](https://hopkinshillel.org)  
Towson University | [towsonhillel.org](https://towsonhillel.org)  
UMBC | [umbchillel.org](https://umbchillel.org)  
College Park | [marylandhillel.org](https://marylandhillel.org)

Hillel enriches the lives of Jewish students so that they may enrich the Jewish people and the world. The Hillels in Maryland welcome students of all backgrounds and foster an enduring commitment to Jewish life, learning and Israel. By participating in life-changing trips and campus initiatives, students learn to make a meaningful impact on the future of the Jewish people while they grow intellectually, socially and spiritually.

## HOLOCAUST REMEMBRANCE COMMISSION (HRC)

BALTIMORE JEWISH COUNCIL (BJC)

[baltjc.org/holocaust-remembrance](https://baltjc.org/holocaust-remembrance)

BJC's HRC honors the memory of the millions who perished during the Nazi era through commemoration and education. Not only does the HRC serve as a liaison to various resources in our community regarding Holocaust matters, but it also offers a wide range of program and resources, including first-hand Holocaust survivor testimony. Attend a program and deepen your understanding of the Holocaust.

## JEWISH NEW TEACHER PROJECT (JNTP)

MACKS CENTER FOR JEWISH EDUCATION (CJE)

[cjebaltimore.org/day-schools](https://cjebaltimore.org/day-schools)

JNTP provides one-on-one mentoring to new day school teachers and training for seasoned teachers to become those mentors. JNTP is a subsidiary of the New Teacher Center, a national nonprofit dedicated to improving student learning by accelerating the effectiveness of new teachers and school leaders.



## MARIPOSA

MACKS CENTER FOR JEWISH EDUCATION (CJE)

[cjebaltimore.org/day-schools](https://cjebaltimore.org/day-schools)

Through the generosity of the Charles Crane Family Foundation, Mariposa Child Success programs train adults to help children succeed while accelerating the development of the social and emotional competencies that children need to be successful in life.

## MELTON ADULT EDUCATION

MACKS CENTER FOR JEWISH EDUCATION (CJE)

[cjebaltimore.org/adults](http://cjebaltimore.org/adults)

The Florence Melton School of Adult Jewish Learning provides lifelong Jewish learning experiences for adults. The program offers a pluralistic, diverse and socially interactive environment in a variety of locations throughout Baltimore and Harford County. Courses include Israel, mysticism, Jewish history, Bible studies, ethics and life cycle events.

## SIFRIYAT PIJAMA B'AMERICA (SP-BA)

MACKS CENTER FOR JEWISH EDUCATION (CJE)

[cjebaltimore.org/sifriyat-pijama-bamerica](http://cjebaltimore.org/sifriyat-pijama-bamerica)

SP-BA is a Hebrew and Jewish family engagement literacy program implemented throughout the United States. Families with children ages two through eight receive free books and music in Hebrew on a monthly basis and are invited to participate in Hebrew language storytimes and events.

## SUKKAHPALOOZA – SUKKOT RETREAT

PEARLSTONE CENTER

[pearlstonecenter.org](http://pearlstonecenter.org)

Be Pearlstone's *Ushpizzin*, honored Sukkot guests, and soak in Sukkot, the Harvest Festival, as it's truly meant to be experienced. Feast on delicious, healthy, kosher food in the big communal *sukkah*. Sleep under the stars in the *sukkah* or in Pearlstone's beautiful rustic cabins, while building community through song, prayer and fun on the farm! Come for a meal, a day, a night or the full retreat.

## TZION

BALTIMORE HEBREW INSTITUTE AT TOWSON UNIVERSITY (BHI)

[towson.edu/bhi](http://towson.edu/bhi)

TZION is an adult education course that explores the history of Zionism and the state of Israel. The course, taught by Neil Rubin, Ph.D. on Wednesday evenings, is attentive both to historical context and the content of ideas.



# Professionals



## CAREER CENTER

JEWISH COMMUNITY SERVICES (JCS)

[jcsbaltimore.org/job-seeking](http://jcsbaltimore.org/job-seeking)

The JCS Career Center is dedicated to helping all individuals, including teens and persons with special needs, find and maintain employment. Write an eye-catching cover letter, format the perfect resume, network like a pro and ace that interview! JCS helps people find jobs in a variety of industries and at all levels – entry level to executive.

## MARYLAND/ISRAEL DEVELOPMENT CENTER (MIDC)

[marylandisrael.org](http://marylandisrael.org)

MIDC is a nonprofit organization that promotes bi-lateral trade and investment between Maryland and Israel. It is a "public-private partnership" between Maryland's Department of Business and Economic Development, Israel's Ministry of Economy and The Associated. Volunteers can join one of several committees including: the Baltimore-Ashkelon Economic Development Committee, the Information Technology and Cyber Security Committee, the Life Sciences Committee, the Membership Committee and the Montgomery County Committee.

## PLANNED GIVING ROUND TABLE (PGRT)

THE ASSOCIATED

[associated.org/pgrt](http://associated.org/pgrt)

PGRT brings together professionals from a variety of disciplines who may be involved in some aspect of a planned gift to charity.

Participants have the opportunity to network, hear from nationally-recognized planned giving and financial experts and enhance their skills by incorporating charitable planning techniques in clients' tax, financial and estate planning.



## Learning happens at any age

It doesn't matter if you've been out of school for two months or 25 years – you can enrich your Jewish education whenever! **SO, WHAT DO OUR AVERAGE JEWISH LEARNERS LOOK LIKE IN OUR COMMUNITY?**



**THEY ARE YOUNG AND INQUISITIVE.**  
More than 300 young children enrolled in one of our JCC's educational programs.



**THEY LOOK FOR EXPERIENCES.**  
The Jewish Museum of Maryland served more than 4,300 students and teachers through on-site field trips and outreach activities.



**THEY HAVE PRIDE IN ISRAEL.**  
More than 2,400 people went to programs run by our *shinshinim* (young Israeli emissaries).



**THEY TAKE CARE.**  
In one calendar year, Pearlstone Center saw more than 6,000 people make the trek to their farm to participate in their environmental education programs.



**THEY ARE PROFESSIONAL.**  
More than 380 professionals attended one of the Darrell D. Friedman Institute for Professional Development's 950 educational sessions that focused on improving the quality of our community's programs and services.

For a listing of day schools, please visit [associated.org/communityresources/schools](http://associated.org/communityresources/schools)

Whether your goal is to grow your business, turn your care for the Jewish community into action or connect with industry leaders, do it by networking through The Associated. We bring together professionals of all backgrounds and interests who share your passion for Jewish community and philanthropy.

[associated.org/professionals](http://associated.org/professionals)

### THE DARRELL D. FRIEDMAN INSTITUTE FOR PROFESSIONAL DEVELOPMENT AT THE WEINBERG CENTER (DFI)

[thedfi.org](https://thedfi.org)

For professionals working in Jewish organizations, DFI provides opportunities for expanding leadership and management skills while building Jewish knowledge that impacts the unique work we do in the Jewish community. Participation in workshops offers a path to stronger Jewish organizations, enhanced work with our lay partners and excellence in the workplace.

### EARLY CHILDHOOD EDUCATORS PROFESSIONAL DEVELOPMENT

**MACKS CENTER FOR JEWISH EDUCATION (CJE)**

[cjebaltimore.org](https://cjebaltimore.org)

The CJE offers ongoing professional development opportunities for early childhood educators in Jewish preschools and child care settings in Baltimore City

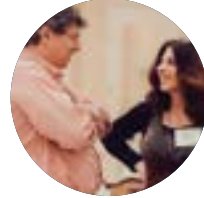
and Baltimore County. MSDE-approved workshops focus on a wide variety of topics, including child development, special needs, Jewish values and practice, creative approaches, emergent curriculum and more.

### EMPLOYER AND BUSINESS SERVICES

**JEWISH COMMUNITY SERVICES (JCS)**

[jcsbaltimore.org/employers](https://jcsbaltimore.org/employers)

JCS assists employers with recruiting and finding qualified employees who meet the specific needs of their business, at no cost to the employer. When employers list their open positions with JCS, their account representatives work tirelessly to find the right match among the Career Center clients. JCS also provides employers with professional out-placement services for displaced workers at competitive market rates.



### FUNDING FOR EDUCATORS

**MACKS CENTER FOR JEWISH EDUCATION (CJE)**

[cjebaltimore.org](https://cjebaltimore.org)

CJE administers a wide variety of grant funds that provide financial assistance for educators and school programs, including the Congregational School Professional Development Grant, the Crane Full-Time Teacher Benefit and the Crane Professional Development Grants.

### INSTITUTE FOR PROFESSIONAL DEVELOPMENT

**JEWISH COMMUNITY SERVICES (JCS)**

[jcsbaltimore.org/professional-development](https://jcsbaltimore.org/professional-development)

The Institute for Professional Development of JCS offers professional development workshops for social workers and other human service providers. JCS is approved by the State Board of Social Work Examiners to offer Category I Continuing Education Credits for social workers and psychologists. JCS also provides CPR and First Aid training for individuals or groups.

# Seniors (55+)



**The opportunity to lead a rich, vibrant life exists here in Jewish Baltimore. Whether you need health care, housing or other community resources, an enhanced quality of life awaits each and every older adult. You can age with grace, dignity, purpose and joy.**

[associated.org/seniors](https://associated.org/seniors)

### NORTHWEST NEIGHBORS CONNECTING (NNC)

**CHAI: COMPREHENSIVE HOUSING ASSISTANCE, INC.**

[chaibaltimore.org/nnc](https://chaibaltimore.org/nnc)

NNC is a mutual support network, or “village,” dedicated to helping seniors and people of all ages live well in their neighborhoods. Everybody has something to give and everybody has something to gain. NNC members not only receive services but they can also assist other members.

### SAFE: STOP ABUSE OF ELDER

**CHANA, JEWISH COMMUNITY SERVICES (JCS) AND LEVINDALE**

[chanabaltimore.org/elderabuse](https://chanabaltimore.org/elderabuse)

SAFE is a comprehensive approach to address the needs of seniors facing abuse at the hands of an intimate partner, family member or caretaker. Services include educational and awareness workshops for seniors, their loved ones and caretakers as well as organizations that serve our older population. Coordinated advocacy, counseling, legal services and appropriate shelter is also available.

### EDWARD A. MYERBERG CENTER

**CHAI: COMPREHENSIVE HOUSING ASSISTANCE, INC.**

[myerberg.org](https://myerberg.org)

Since 1976, the Edward A. Myerberg Center has been helping active adults 55+ in Baltimore stay active, engaged, healthy and connected. The Myerberg Center is a true community center, not only for the 1,200 members, but for the entire northwest Baltimore community. Members enjoy more than 125 classes each year – in art, literature, current events, popular culture, technology, health and fitness, foreign language and religion. The center also provides vital social services needed by many members of our community, including access to resources, counseling and support groups.



## Network with The Associated

Advance your networks and leadership skills through The Associated's philanthropic, educational and networking events and programs.

#### REAL ESTATE INDUSTRY GROUP (REIG):

Network at Baltimore's most innovative development projects with REIG. Often held on-site at real estate projects in various stages of development, these networking and educational opportunities bring together professionals interested in deepening their relationships with one another and the Baltimore Jewish community.

#### MAIMONIDES SOCIETY:

Learn with other Jewish healthcare professionals. The Associated's Maimonides Society hosts industry-related programs, through a Jewish lens, that are open to all healthcare professionals.

#### JEWISH PROFESSIONAL WOMEN (JPW):

Amazing energy and connections. New perspectives on work, life and personal growth. JPW provides opportunities for career-minded women to network, socialize and learn together.

[ASSOCIATED.ORG/PROFESSIONALS](https://associated.org/professionals)

## ARTS AND CULTURE EVENTS AND CLASSES

### JEWISH COMMUNITY CENTER (JCC)

[jcc.org/arts-culture](http://jcc.org/arts-culture)

Older adults can become a part of the JCC's creative community! Whether you have untapped artistic ambitions or are just an art enthusiast, bring out your inner artist at the J. Try an art class with talented instructors from Baltimore's best arts organizations, take part in intelligent discussions about current events or the latest read, catch a flick at the Baltimore Jewish Film Festival and see performances in the beautiful 550-seat Gordon Center for Performing Arts.

## BALTIMORE HOLOCAUST SURVIVORS AND DESCENDANTS GROUP (BHSD)

### BALTIMORE JEWISH COUNCIL (BJC)

[baltjc.org/services-for-holocaust-survivors](http://baltjc.org/services-for-holocaust-survivors)

BJC's BHSD commemorates and honors the memory of the Holocaust, educates the community about this event in human history, preserves and passes our Jewish heritage to the younger generation, encourages the descendants not to let the Holocaust be forgotten and combats anti-Semitism and Holocaust deniers.

## CAREGIVING AND AGING

### JEWISH COMMUNITY SERVICES (JCS)

[jcsbaltimore.org/aging-caregiving](http://jcsbaltimore.org/aging-caregiving)

JCS helps older adults age in place with maximum independence and dignity. Specialists in gerontology offer older adults, their families and caregivers up-to-date information and resources, expert advice and senior-focused services that support healthy living, promote safety and improve quality of life.

## EATING TOGETHER

### CHAI: COMPREHENSIVE HOUSING ASSISTANCE, INC.

[Myerberg Center:](http://mybergcenter.org)

[410-358-6856](tel:410-358-6856)

[Weinberg Senior Living Buildings:](http://weinbergseniorliving.com)

[weinbergseniorliving.com](http://weinbergseniorliving.com)

Adults ages 60 and older can enjoy a nutritious, kosher meal with each other. Engaging conversation can be found at The Myerberg Center and many Weinberg Senior Living buildings. Lunch and dinner times vary.



## ELDER CARE MANAGEMENT

### JEWISH COMMUNITY SERVICES (JCS)

[jcsbaltimore.org/care-management](http://jcsbaltimore.org/care-management)

Elder Care Management supports individuals in their desire to continue living in their own homes or in other settings with maximum independence and dignity while providing their family and caregivers with peace of mind. The JCS Care Management team provides a comprehensive individual assessment and creates a personalized plan of care. They also coordinate services, advocate with health care professionals and provide ongoing communication with the family.

## MILLBROOK FRIENDLY NEIGHBORHOOD (MFN)

### CHAI: COMPREHENSIVE HOUSING ASSISTANCE, INC.

[410-500-5300](tel:410-500-5300)

MFN serves residents in the Millbrook

Park Apartments of Baltimore County. Residents have access to critical case management and services in both English and Russian. In addition, CHAI brings residents together to discuss happenings in the community and strengthen neighborhood relationships.



## NORTHWEST SENIOR SHUTTLE (NWSS)

### CHAI: COMPREHENSIVE HOUSING ASSISTANCE, INC.

[410-889-1148](tel:410-889-1148)

The NWSS provides affordable and reliable transportation for residents of the Weinberg Senior Living buildings in Pikesville and Park Heights, as well as members of Northwest Neighbors Connecting. NWSS offers daily shuttle service to grocery stores, local shopping centers, libraries, senior centers and special excursions. Make a reservation today!

## SENIOR DROP IN

### JEWISH COMMUNITY CENTER (JCC)

[410-484-0399](tel:410-484-0399)

Make the Weinberg Park Heights JCC your home away from home on Tuesday afternoons. Participate in conversations, as well as educational, social and recreational activities. Each week is unique and includes lunch; membership not required.

## SENIOR HOME REPAIR & BENEFITS PROGRAM

### CHAI: COMPREHENSIVE HOUSING ASSISTANCE, INC.

[chaibaltimore.org/shr](http://chaibaltimore.org/shr)

CHAI ensures that each year 200 low-income senior and disabled persons' households in Northwest Baltimore receive necessary home safety repairs, modifications, assistive devices and access to other related services.

## SERVICES FOR HOLOCAUST SURVIVORS

### JEWISH COMMUNITY SERVICES (JCS)

[jcsbaltimore.org/services-for-holocaust-survivors](http://jcsbaltimore.org/services-for-holocaust-survivors)

JCS offers a number of social services, supports and resources for Holocaust survivors, including financial assistance, home care subsidies, counseling and service coordination. In addition, JCS hosts the Holocaust Survivors Social Club where participants have the opportunity to get together monthly for social gatherings, cultural activities, musical programs, guest speakers and luncheons.

## SUPPORTIVE COMMUNITY NETWORK (SCN)

### CHAI: COMPREHENSIVE HOUSING ASSISTANCE, INC.

[chaibaltimore.org/scn](http://chaibaltimore.org/scn)

The Supportive Community Network is a resource for communities throughout Jewish Baltimore that want to start a "village" that supports its residents to age well in the community. SCN provides consultation, project management support, partnership development, program development and much more.

## WARM HOUSES

### JEWISH COMMUNITY CENTER (JCC)

[410-484-0399](tel:410-484-0399)

Groups gather weekly in their homes to participate in conversations, activities and education. Participants meet monthly for large-scale special programs with a featured presenter and an opportunity to interact in a larger group setting.

## WEINBERG PARK ASSISTED LIVING

### CHAI: COMPREHENSIVE HOUSING ASSISTANCE, INC.

[weinbergpark.com](http://weinbergpark.com)

Weinberg Park Assisted Living provides assisted living services to up to 36 residents with kosher meals, social opportunities and help with activities of daily living.

## WEINBERG SENIOR LIVING

### CHAI: COMPREHENSIVE HOUSING ASSISTANCE, INC.

[weinbergseniorliving.com](http://weinbergseniorliving.com)

Weinberg Senior Living offers quality, affordable apartments for seniors and older adults with disabilities in 15 buildings throughout northwest Baltimore. All residents can take advantage of numerous services and activities, including Eating Together meal programs and shuttle bus transportation. Volunteers are needed to assist in providing attentive and beneficial care to our residents.

# From Abroad to Baltimore

Growing up in the Ukraine, Miriam Fromberg only knew two Jewish holidays: Chanukah and Passover. Her grandmother used to give Chanukah gelt to family members and smuggle *matzah* during Passover.

"My grandmother would disappear for the night, and I used to ask my parents, 'Where is grandmother?' They told me, 'She will be back. She will be back,' but they wouldn't tell me where she went.

Very early in the morning – when it was still dark – she would come back with a filled pillowcase. We didn't know what was in the pillowcase.

Turns out, it was *matzah* – big, round *matzah*. Handmade. That's how we knew it was a Jewish holiday!"

Today, Miriam has five grandchildren and two great-grandchildren – whom she calls her greatest achievement.



DO YOU HAVE AN INSPIRING, ASSOCIATED STORY TO SHARE? LET US KNOW ONLINE AT [ASSOCIATED.ORG/TELLUSYOURSTORY](http://ASSOCIATED.ORG/TELLUSYOURSTORY)

# Special Needs



**Live your best life – regardless of ability.** Whether you're looking for inclusion programs at school or camp, Jewish Baltimore is here every step of the way – from infancy to adulthood.

[associated.org/specialneeds](http://associated.org/specialneeds)

## HEMESH

[shemeshbaltimore.org](http://shemeshbaltimore.org)

HEMESH provides the educational support necessary for Jewish children with learning differences to reach their full potential in a Jewish setting. A team of professionals offers services to the Jewish day schools, including early intervention, social skills training, reading intervention, executive function coaching, professional development and supporting inclusion, co-teaching and specialized instruction in the learning centers.

## J CAMPS INCLUSION PROGRAM

[jcc.org/camps/owings-mills/special-needs](http://jcc.org/camps/owings-mills/special-needs)

[jcc.org/camps/owings-mills/special-needs](http://jcc.org/camps/owings-mills/special-needs)

The J Camps Inclusion Program serves children ages five to 13 with mild to severe learning, developmental, social, emotional and physical disabilities. Children are included in camp bunks with their non-disabled peers and participate in exciting general camp activities paired with a one-on-one counselor who assists with the inclusion process.



## BALTIMORE JEWISH ABILITIES ALLIANCE (BJAA)

[jewishabilities.org](http://jewishabilities.org)

[jewishabilities.org](http://jewishabilities.org)

The BJAA is an outreach effort designed to support and connect individuals with different needs and their families through all stages of life. The BJAA connects people through many different venues, such as workshops, programs and community events. The website acts as a guide for supporting your loved ones from early childhood to adulthood, as well as access to more than 400 community resources and related events.

## AFTER SCHOOL INCLUSION AT THE KIDS CENTER

[jcc.org/specialneeds](http://jcc.org/specialneeds)

[jcc.org/specialneeds](http://jcc.org/specialneeds)

Children with varying disabilities participate alongside their typically-developing peers in the Kids Center and TNTU after-school programs with support and resources from qualified staff. Participants experience dynamic activities while paired with one-on-one counselors to help them with the inclusion process.



## ARTS WITH YACHAD

[jcc.org/specialneeds](http://jcc.org/specialneeds)

[jcc.org/specialneeds](http://jcc.org/specialneeds)

Adults with developmental disabilities make fun craft and ceramic projects. Everyone has a work of art to take home!

## CENTER FOR JEWISH EDUCATION'S JILL FOX MEMORIAL FUND

[cjebaltimore.org/jill-fox-fund](http://cjebaltimore.org/jill-fox-fund)

[cjebaltimore.org/jill-fox-fund](http://cjebaltimore.org/jill-fox-fund)

The Jill Fox Memorial Fund, Inc. partners with the Macks Center for Jewish Education to provide grants to individuals with unmet medical and healthcare needs – related to the areas of autism, childhood obesity or childhood mental illness – that are not paid for by other sources (e.g. medical insurance, government agencies, etc).

## CHADD SUPPORT GROUP FOR PARENTS OF CHILDREN WITH ATTENTION DISORDERS

[shemeshbaltimore.org/shemesh-calendar](http://shemeshbaltimore.org/shemesh-calendar)

If your child has trouble staying on task or focusing, HEMESH and CHADD of Greater Baltimore invite you to join its support group that meets the first Wednesday of every month.

## CHAVERIM CLUB

[jcc.org/specialneeds](http://jcc.org/specialneeds)

[jcc.org/specialneeds](http://jcc.org/specialneeds)

This program, for adults who have mild to more severe developmental and/or physical disabilities, consists of recreational and leisure-time activities including arts and crafts, games and holiday celebrations that encourage the adults to have positive interactions and experiences with their peers.

## COMMUNITY-BASED SERVICES

[jcsbaltimore.org/living-with-special-needs](http://jcsbaltimore.org/living-with-special-needs)

[jcsbaltimore.org/living-with-special-needs](http://jcsbaltimore.org/living-with-special-needs)

JCS provides counseling, advocacy and case management services to children, adults and families of individuals with special needs. Other services include assistance with independent living skills, tutoring and obtaining special equipment. JCS helps families obtain resources, services and funding through the Developmental Disability Administration (DDA) and other sources.

## EMPLOYMENT SERVICES FOR PEOPLE WITH SPECIAL NEEDS

[jcsbaltimore.org/job-seeking](http://jcsbaltimore.org/job-seeking)

[jcsbaltimore.org/job-seeking](http://jcsbaltimore.org/job-seeking)

The JCS Career Center is certified by Maryland's Developmental Disabilities Administration, Division of Rehabilitation Services and Behavioral Health Administration to provide specialized services that help individuals with disabilities find and maintain employment. Tailored to each client's unique needs and goals, career assessments, employment readiness training, job search assistance, job development and placement, job coaching, long-term supported employment, benefits counseling, case management and advocacy are provided by JCS' specially-trained and experienced staff.



## GESHER LATORAH

[cjebaltimore.org/gesherlatorah](http://cjebaltimore.org/gesherlatorah)

[cjebaltimore.org/gesherlatorah](http://cjebaltimore.org/gesherlatorah)

Gesher LaTorah is a community-based religious school for students with significant special needs. Meeting every Sunday, students age four to 21 enjoy enriching programs rooted in Jewish values and learn about Jewish concepts such as community, Torah, Hebrew, prayer, customs and holidays. Personalized bar/bat mitzvah consultation is available to help families create a meaningful lifecycle event.

## GETTING TOGETHER CLUB

[jcc.org/specialneeds](http://jcc.org/specialneeds)

[jcc.org/specialneeds](http://jcc.org/specialneeds)

This weekly social group offers activities for adults who want to improve their social life, life skills and emotional well-being at the JCC and in the community.

## JEWISH ADVOCATES FOR DEAF EDUCATION (JADE)

[cjebaltimore.org/jade](http://cjebaltimore.org/jade)

[cjebaltimore.org/jade](http://cjebaltimore.org/jade)

JADE promotes inclusion and access for individuals who are deaf and hard of hearing, and offers funding and support for Oral and Sign Language interpreters at Jewish community events. JADE provides Jewish learning workshops and activities for the Jewish campers at the Deafblind Camp of Maryland.

## KARMA DOGS

[cjebaltimore.org/karma-dogs](http://cjebaltimore.org/karma-dogs)

[cjebaltimore.org/karma-dogs](http://cjebaltimore.org/karma-dogs)

Shy or reluctant readers can join the CJE monthly to read with Karma Dogs from H.E.A.R.T.S. (Help Encourage All Readers to Succeed). These dogs are friendly, non-judgmental and good listeners. For five to 12 year olds; adult supervision is required.

## KEEP LIVING AND LEARNING (KLAL)

### JEWISH COMMUNITY CENTER (JCC)

[jcc.org/specialneeds](http://jcc.org/specialneeds)

This self-contained camp program is for young adults ages 16 to 25 with learning, developmental, social, emotional and physical disabilities. Participants will engage in vocational training, life skill building, community service projects, trips and therapies. The program will also feature a camper-run café for family members and JCC staff. KLAL extends beyond camp with KLAL for Every Season, a place for teens and young adults with a wide range of special needs to develop appropriate social skills and friendships, increase self-esteem and develop a feeling of connection to the Jewish community.

## MARYLAND SPECIAL NEEDS ADVOCACY PROJECT (MDSNAP)

### MACKS CENTER FOR JEWISH EDUCATION (CJE)

[cjebaltimore.org/mdsnap](http://cjebaltimore.org/mdsnap)

MDSNAP provides access to testing and services for families of children with a wide range of learning differences, special needs and diagnosed disabilities. The project offers free educational advocacy to families with children from birth to age 21. The project serves as a repository of information and can help families find the support and resources they need.

## RESIDENTIAL PROGRAMS FOR ADULTS

### JEWISH COMMUNITY SERVICES (JCS)

[jcsbaltimore.org/living-with-special-needs](http://jcsbaltimore.org/living-with-special-needs)

JCS residences enable adults with developmental disabilities to live as independently as possible and participate fully in community life. JCS provides residential services in nine professionally-staffed homes – Alternative Living Units (ALUs) – in Northwest Baltimore City/Baltimore County communities, each home to three adults with developmental disabilities.

## SUNDAY FUNDAY

### JEWISH COMMUNITY CENTER (JCC)

[jcc.org/specialneeds](http://jcc.org/specialneeds)

Sunday Funday is an afternoon of recreational and social activities for children ages five to 15, including games, arts and crafts, music, drama, cooking and physical activities that respond to their needs. This is a great venue for children to develop appropriate social skills and friendships, enhance coordination, increase self-esteem and create a feeling of acceptance in the community.



## TJ and Ethan

His blog, *Dad Enough*, started as a writing space, says T.J. Casser, a place where he could share the roller-coaster of raising a child with autism. "Too few dads talk about it and many dads and families do not know about available resources."

One of the family's main resources became the JCC, a welcome ally as T.J. and his wife Jocelyn organized activities for Ethan, now 8. Diagnosed as a preschooler, Ethan thrived first at the JCC's preschool camp, Noah's Ark, and is now an active camper in the inclusion program at J Camp. He attends a local school for children with special needs and the J's School's Out program during winter and spring breaks. Ethan also enjoys Sunday Funday, an activity program for children with special needs, including swimming, Ethan's hands-down favorite activity.

"We love how welcoming everyone is and how they look out for him," says T.J. "We feel like part of a large family. Everything is so much better than we thought it could be."

## TAG

### MACKS CENTER FOR JEWISH EDUCATION (CJE)

[cjebaltimore.org/tag](http://cjebaltimore.org/tag)

TAG – *Torah, Avodah and Gmitut Chasadim*, meaning Bible study, prayer/work and acts of kindness and goodwill – is a program for adults over the age of 17 with special needs. Meeting weekly to connect their Jewish heritage and community in an age-appropriate setting, TAG students also learn self-advocacy.

# Support Services



We all need a little help sometimes – help getting by when times are tough, help applying for a loan, help overcoming an addiction. Whatever your need is, Jewish Baltimore will extend a helping hand.

[associated.org/gethelp](http://associated.org/gethelp)

## CAREER CENTER

### JEWISH COMMUNITY SERVICES (JCS)

[jcsbaltimore.org/job-seeking](http://jcsbaltimore.org/job-seeking)

The JCS Career Center is dedicated to helping all individuals, including teens and persons with special needs, find and maintain employment. Write an eye-catching cover letter, format the perfect resumé, network like a pro and ace that interview! JCS helps people find jobs in a variety of industries and at all levels – entry level to executive.

## ABUSE SUPPORT SERVICES

### CHANA

[chanabaltimore.org](http://chanabaltimore.org)

CHANA is the Baltimore Jewish community's response to interpersonal violence, including domestic violence, sexual abuse and mistreatment of older adults. A wide range of services are offered including crisis intervention, counseling referrals, legal advocacy, kosher safe house and safety planning for victims, survivors and their families. Workshops on healthy relationships, dating abuse, stalking and cyberbullying are available for students of all ages and their parents. Consultation, education and training on effective responses are available for schools, synagogues and other institutions.

## HOME RETENTION

### CHAI: COMPREHENSIVE HOUSING ASSISTANCE, INC.

[chaibaltimore.org/housing-services-loans](http://chaibaltimore.org/housing-services-loans)

CHAI provides foreclosure prevention counseling to mortgage-stressed homeowners. CHAI works with homeowners to reach a mutually sustainable resolution with their mortgage servicers to assist families in preventing foreclosure.

## CONNECTIONS TO RESOURCES AND SERVICES

### JEWISH COMMUNITY SERVICES (JCS)

[jcsbaltimore.org](http://jcsbaltimore.org)

JCS offers programs, services and resources that can meet the diverse needs of individuals and families throughout the Greater Baltimore area. From information about social services and local support groups to where to find the closest kosher market and everything in between, trust JCS to connect you to the community resources you need.



## ADDICTION SERVICES

### JEWISH COMMUNITY SERVICES (JCS)

[jcsbaltimore.org/addiction-services](https://jcsbaltimore.org/addiction-services)

JCS addresses the challenges of substance use, abuse and addiction through recovery-focused individual, family and group counseling treatment and referral services. JCS also offers age appropriate prevention education and outreach to children, teens and adults.

## ASSISTANCE FOR NON-ENGLISH-SPEAKING AMERICANS

### JEWISH COMMUNITY SERVICES (JCS)

[jcsbaltimore.org/services](https://jcsbaltimore.org/services)

JCS provides service coordination that helps non-English-speaking Americans connect to community services and resources. JCS also has volunteers who can translate nonmedical terminology at medical and other important appointments and tutors who can help clients gain English language skills needed for employment applications and interviews.

## ECONOMIC SUPPORT SERVICES

### JEWISH COMMUNITY SERVICES (JCS)

[jcsbaltimore.org/achieving-financial-stability](https://jcsbaltimore.org/achieving-financial-stability)

Service Coordinators at JCS work with individuals and families experiencing financial setbacks, helping them to assess their situation and develop strategies for regaining self-sufficiency. This may include providing benefit eligibility screening and application assistance, facilitating connections to resources and services and enhancing money management skills.

## EMOTIONAL WELL-BEING

### JEWISH COMMUNITY SERVICES (JCS)

[jcsbaltimore.org/emotional-well-being](https://jcsbaltimore.org/emotional-well-being)

When you need help getting over a rough spot or through a hard time, you can turn to JCS's highly-trained and experienced licensed clinical social workers, counselors, psychologists and psychiatrists. JCS professionals work with families, children, adolescents, couples and adults to develop solutions for life's

challenges and to maintain a healthy perspective on life.

## ENERGY SAVINGS LOANS

### CHAI: COMPREHENSIVE HOUSING ASSISTANCE, INC.

[410-500-5327](tel:410-500-5327)

CHAI provides interest-free loans of up to \$10,000 for homeowners to invest in home renovations that will save energy, lower utility bills and keep housing affordable.



## FALLSTAFF APARTMENTS

### CHAI: COMPREHENSIVE HOUSING ASSISTANCE, INC.

[chaibaltimore.org](https://chaibaltimore.org)

Fallstaff Apartments, CHAI's first Affordable Family Housing project, provides 16 units of affordable family housing, two of which are fully accessible, to families in the northwest Baltimore City Neighborhood of Fallstaff. The project primarily serves residents with incomes at or below 60 percent of area median income.

## HEBREW FREE LOAN ASSOCIATION (HFLA)

[hebrewfreeloan.org](https://hebrewfreeloan.org)

For more than 100 years, the Hebrew Free Loan Association has provided interest-free loans. When it was founded in 1898, HFLA may have helped a peddler start a business by lending him money to buy a horse and a cart. Today, a would-be entrepreneur is more likely to need a computer than a horse, but the principle is the same. Whether you have a family emergency or a bar mitzvah to plan, doctors' bills or a home in need of repair, Hebrew Free Loan can help.

## HOME BUYER LOANS

### CHAI: COMPREHENSIVE HOUSING ASSISTANCE, INC.

[chaibaltimore.org/housing-services-loans](https://chaibaltimore.org/housing-services-loans)

Potential homebuyers interested in living in the northern Park Heights neighborhoods don't have to go through

the process alone. CHAI provides a variety of no-interest loans and assists with access to incentives through Baltimore City, Healthy Neighborhoods, Inc. and other incentive programs. In addition, CHAI provides assistance with managing to home renovations as well as information on local, state and lender financial incentive programs.

## HOPED

### CHAI: COMPREHENSIVE HOUSING ASSISTANCE, INC.

[chaibaltimore.org](https://chaibaltimore.org)

CHAI's HOPED Program is a housing program that serves people with mental illness by providing quality, affordable housing. In addition, CHAI is prepared to support the residents so that they can live successfully – all moved in, living actively and integrated in the community.

## LEGAL CONSULTATION

### JEWISH COMMUNITY SERVICES (JCS)

[jcsbaltimore.org/jls](https://jcsbaltimore.org/jls)

Jewish Legal Services offers a free, monthly, walk-in clinic for low-income individuals. Community lawyers volunteer their time, offering brief pro-bono consultations on a variety of legal issues, including consumer/bankruptcy, landlord-tenant, family and immigration questions. All consultation is confidential and protected by attorney-client privilege.

## NEW HOMEBUYER EDUCATION & COUNSELING

### CHAI: COMPREHENSIVE HOUSING ASSISTANCE, INC.

[chaibaltimore.org/housing-services-loans](https://chaibaltimore.org/housing-services-loans)

CHAI is a HUD approved housing counseling agency that provides potential homebuyers interested in living in the northern Park Heights neighborhoods with information on homes for sale, referrals to housing professionals, homebuyer education and individual pre-purchase counseling.



## PREVENTION EDUCATION

### JEWISH COMMUNITY SERVICES (JCS)

[jcsbaltimore.org/prevention](https://jcsbaltimore.org/prevention)

JCS provides educational programs that increase knowledge and awareness about substance use, abuse, addiction, the spread of HIV/AIDS, bullying and other risky behaviors that can impact well-being. These programs provide information to help children, teens and adults make healthy decisions for themselves and those important to them.

## PSYCHIATRIC REHABILITATION PROGRAM (PRP)

### JEWISH COMMUNITY SERVICES (JCS)

[jcsbaltimore.org/psychiatry-services](https://jcsbaltimore.org/psychiatry-services)

The JCS PRP helps people with chronic mental illness maintain or improve their independence, social living skills and functioning at home and in the community. One-on-one and group support is provided to help each individual maximize independence and to prevent relapse or re-hospitalization.

## THE SHOFAR COALITION

### CHANA

[chanabaltimore.org/sexualtrauma](https://chanabaltimore.org/sexualtrauma)

The Shofar Coalition is the community's collaborative response to adult, adolescent or childhood trauma. Services include professional trauma therapy for women, men and children; professionally facilitated healing groups for adults; community and synagogue-based healing services; and training and educational forums for teachers, parents and organizational professionals and lay leaders.

# Building Healthy Relationships

For more than 20 years, CHANA has offered a Jewish community response to the needs of persons who experience abuse and other forms of interpersonal trauma. Knowing that 50 to 80 percent of teens report knowing someone in an abusive relationship, CHANA provides customized workshops that help teens understand what is healthy and unhealthy in a relationship.

## How can you tell what's healthy or unhealthy?

### A HEALTHY RELATIONSHIP MEANS YOU CAN:

- Hang out with friends and family
- Feel respected and appreciated
- Be yourself
- Walk away
- Talk openly and freely
- Put your phone down

### AN UNHEALTHY RELATIONSHIP MEANS YOU ARE:

- Isolated from your friends and family
- Made fun of in front of others
- Told what to do and what to wear
- Scared to end the relationship
- Afraid to say the wrong thing
- Expected to always answer a call or text

Remember, friends make sure friends are safe – you can make a difference in one person's life.



IF YOU NEED HELP OR YOU'D LIKE TO SCHEDULE AN EDUCATIONAL PROGRAM, CALL CHANA AT 410-234-0030 OR VISIT [CHANABALTIMORE.ORG/TEENS](https://chanabaltimore.org/teens)

# Teens



**Leadership training, becoming a camp counselor, joining Maccabi and more.** Connect with other teens through after school and weekend programming. Where else can you make a difference and have fun all at the same time?

[associated.org/teens](http://associated.org/teens)

## BALTIMORE DILLER TEEN FELLOWS

**JEWISH VOLUNTEER CONNECTION (JVC)**

[associated.org/teens/teenleadership/diller](http://associated.org/teens/teenleadership/diller)

Baltimore Diller Teen Fellows is a 15-month teen leadership program based on four pillars: leadership, Israel, Judaism and *tikkun olam* (repairing the world). Diller Fellows create and implement hands-on community service initiatives, participate in *Shabbatonim* (weekend retreats), monthly workshops and two *mifgashim* (encounters) with their Ashkelon teen counterparts, including a three-week Israel experience. The selection process for this highly competitive program begins in the spring of the 10th grade year and includes an application and interview.

## ELIJAH CUMMINGS YOUTH PROGRAM IN ISRAEL (ECYP)

**BALTIMORE JEWISH COUNCIL (BJC)**

[ecyp.org](http://ecyp.org)

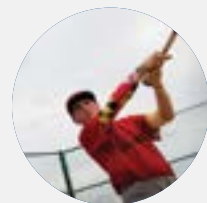
ECYP builds bridges between Baltimore's diverse communities. ECYP provides selected high school students with the tools and real-world opportunities they need to become future leaders. This is accomplished through mentoring, a trip to Israel and participation in the Jerold C. Hoffberger Leadership Enhancement Program.

## JCC MACCABI EXPERIENCE

**JEWISH COMMUNITY CENTER (JCC)**

[jcc.org/maccabi](http://jcc.org/maccabi)

The JCC Maccabi Games are open to Jewish teens ages 13 to 17. Each year our Baltimore delegation sends hundreds of athletes to the various host cities for competition in sports including soccer, basketball, volleyball, bowling, baseball, table tennis, tennis, swimming, softball, dance and track and field. JCC Maccabi ArtsFest is an arts experience for Jewish teens, taking place annually during the summer in selected communities throughout North America. The program strengthens bonds to Jewish heritage, community and Israel.



Get the latest teen programming straight to your inbox. Sign up now: [associated.org/stayintouch](http://associated.org/stayintouch)

## AMERICAN RED CROSS BABYSITTING

**JEWISH COMMUNITY CENTER (JCC)**

[jcc.org/aquatics/certifications](http://jcc.org/aquatics/certifications)

Be the best babysitter you can be when you're American Red Cross certified. Teens ages 11 to 14 receive American Red Cross instruction in basic infant care, first aid for burns, bleeding, choking, head injuries, poison prevention and treatment and safety precautions.

## CENTER FOR TEEN ENGAGEMENT

**JEWISH COMMUNITY CENTER (JCC)**

[dshaffer@jcc.org](mailto:dshaffer@jcc.org)

The Center for Teen Engagement is a new community-wide initiative directed by the JCC of Greater Baltimore with support from The Associated and the Jim Joseph Foundation. The Center for Teen Engagement is designed to engage Baltimore Jewish teens in enriching and meaningful Jewish experiences that will spark their desire to learn and sustain an ongoing connection to Jewish life.



## FRESHMAN VOLUNTEER NETWORK

**JEWISH VOLUNTEER CONNECTION (JVC)**

[associated.org/teens/teenleadership/fvn](http://associated.org/teens/teenleadership/fvn)

Freshman Volunteer Network (FVN) fellows learn about vital community needs and work together to create a difference in a nonprofit organization in the community. The teens will be responsible for leading all aspects of the volunteer projects including Jewish service learning, programming at the site and a post-service reflection. Each teen will earn 15 community service hours if they participate in all of the service projects.

## HAZAMIR BALTIMORE JEWISH HIGH SCHOOL CHOIR

**JEWISH COMMUNITY CENTER (JCC)**

[jcc.org/high-school](http://jcc.org/high-school)

HaZamir Baltimore, one of 30 chapters of HaZamir: The International Jewish High School Choir, provides teens the opportunity to gather together, sing Jewish choral music, build community and connect to teens in the U.S. and Israel. The program fosters a lifelong commitment to Jewish culture and music in young people and builds a strong foundation for future Jewish involvement among its participants.

## ISRAEL HIGH

**MACCS CENTER FOR JEWISH EDUCATION (CJE)**

[cjebaltimore.org/israel-high](http://cjebaltimore.org/israel-high)

Through this program, the CJE prepares high school students in anticipation of any anti-Semitism or anti-Israel sentiments that they may encounter on college campuses. By drawing on the most effective international organizations, CJE ensures that students have a strong sense of Jewish identity and the tools to feel confident and proud.

## JOIN

**JEWISH COMMUNITY SERVICES (JCS)**

[joinbalt.org](http://joinbalt.org)

JOIN offers teens ages 11 to 18 a variety of programming that addresses the real issues they face in today's complex world. JOIN's professionally-trained Teen Outreach Staff can be found in the community meeting teens where they are – at a local coffee shop, pizza place, synagogue, teen center, as well as on social media – providing programs, promoting healthy decision-making or lending an ear. Staff also helps teens or their families connect to community resources, services, programs and community service opportunities.

## MIDDLE SCHOOL LEADERSHIP COUNCIL

**JEWISH COMMUNITY CENTER (JCC)**

[jcc.org/teens/leadership](http://jcc.org/teens/leadership)

The Middle School Leadership Council is a group of teen leaders who work together to create programs for their peers while gaining leadership and team building skills.

## TEEN VOLUNTEER OPPORTUNITIES FOR GRADES 6-8

**JEWISH VOLUNTEER CONNECTION (JVC)**

[jvcbaltimore.org/teens](http://jvcbaltimore.org/teens)

JVC connects middle school students to volunteer opportunities through one-time and ongoing projects at service sites like the Baltimore Humane Society, Weinberg Village and Pearlstone Center. Projects meet needs within the community and fulfill *B'nai Mitzvah* and school service requirements.



## TEEN VOLUNTEER OPPORTUNITIES FOR GRADES 9-12

**JEWISH VOLUNTEER CONNECTION (JVC)**

[jvcbaltimore.org/teens](http://jvcbaltimore.org/teens)

High school teens volunteer throughout the community on projects organized and run by their peers. A long-term commitment is not required. Examples of past projects include after-school sports, arts and academic programs in Baltimore City, current event conversations with seniors, cooking and serving meals at homeless shelters and interactive activities with children.

## STUDENTS TAKING ACTION FOR CHANGE (STAC)

### JEWISH VOLUNTEER CONNECTION (JVC)

[associated.org/teens/teenleadership/stac](https://associated.org/teens/teenleadership/stac)  
STAC is a nine-month program that focuses on social justice and advocacy, and includes an opening retreat, Advocacy Day in Annapolis, a one-day experience in DC, late nights and monthly seminars. STAC fellows work with one another to develop advocacy initiatives in the community. The selection process for this highly competitive program begins in the spring of 9th or 10th grade.

## TEEN GIVING INITIATIVE (TGI)

### JEWISH VOLUNTEER CONNECTION (JVC)

[associated.org/teens/teenleadership/tgi](https://associated.org/teens/teenleadership/tgi)

TGI focuses on leadership, fundraising and grant making skills. Fellows develop their own fundraising initiatives and select focus areas to allocate their funds. This nine-month program includes an opening retreat, agency site visits, a late night and monthly seminars. The selection process for this highly competitive program begins in the spring of the ninth or 10th grade year.



## TEEN SERVICE COUNCIL

### JEWISH VOLUNTEER CONNECTION (JVC)

[associated.org/teens/teenleadership/tsc](https://associated.org/teens/teenleadership/tsc)

The Teen Service Council is an eight-month program open to teens in grades 10 to 12 who want to make a difference in the Baltimore community. Teens meet three times during the year to learn about vital community needs and gain skills as they plan and implement individual service projects. JVC staff match participants' volunteer interests with community service agencies.

## TEEN SUMMER SERVICE JEWISH VOLUNTEER CONNECTION (JVC)

[associated.org/teens/teenleadership](https://associated.org/teens/teenleadership)

Teen Summer Service provides many options for teens in grades six through 12 who want a meaningful summer experience helping others. The options include connecting teens with service opportunities based on their interests, assisting teens in creating a VolunTeam service project for themselves and their peers and connecting teens with existing volunteer and leadership programs in the community.

"A big part of Judaism is community – and at the JCC, you are part of that community."



JORDAN KING AND JACOB LAPIDUS

Best friends and college students, JCC basketball teammates

Our mothers tell us we met when we were two – in the JCC's Mommy and Me class – although we have to admit we can't remember that far back. What we do know is that the J has been a part of our lives ever since – and one of the reasons we're still best friends.

When we decided to go to different high schools, it would have been easy to grow apart. Yet, thanks to the J, we continued to keep in touch, getting together to play basketball and becoming teammates on the Maccabi basketball team. We now had scheduled time to hang out, while doing what we loved. The J was our community...where we felt at home.

READ MORE AT  
[ASSOCIATED.ORG/OURSTORIES](https://associated.org/ourstories)

# Women



You feel it — the draw to make the world a better place, the need to serve with purpose and meaning.

Through volunteer programs, community leadership roles and philanthropic opportunities, every woman matters here. Come as you are, give as you can, grow as you do.

[associated.org/women](https://associated.org/women)

## ASSOCIATED WOMEN AND OUR COMMUNITY

[associated.org/women](https://associated.org/women)

Whether you give a gift in your own name, attend a community-wide event or participate in a smaller, personalized volunteer experience, Associated Women creates memorable, exciting ways to make a difference in Jewish Baltimore. Previous activities have included creation of a public art project, tree planting and food preparation for donation to a local shelter.

## CHANA

[chanabaltimore.org](https://chanabaltimore.org)

CHANA provides support, counseling and assistance to Jewish victims of domestic violence and empowers them to obtain safe environments for themselves and their families. Confidential services include a telephone helpline, individual counseling, legal services and community education.

## CHAPTER TWO

### ASSOCIATED WOMEN

[associated.org/chapter2](https://associated.org/chapter2)

Chapter Two, a 10-month educational and engagement program geared toward women who are empty nesters, recruits those who are at a stage in their lives when they are looking to grow as Jewish women. Participants learn about themselves, are educated about The Associated and its agencies, take part in experiential learning and hands-on social action and capture their passion and turn it into action.

## DOR TIKVAH

### ASSOCIATED WOMEN

[associated.org/dortikvah](https://associated.org/dortikvah)

Dor Tikvah, a two-year leadership development program, caters to women primarily between ages 30 to 45 who aspire to hold key positions within The Associated and the Baltimore Jewish community. Dor Tikvah draws inspiration from the Jewish traditions of *tzedakah* (social justice) and *tikkun olam* (repairing the world). Through leadership development, educational programs, community service and agency experiences, participants learn about the Jewish community, as well as the importance of women's philanthropy.



### JEWISH WOMEN'S GIVING FOUNDATION OF BALTIMORE (JWGF)



ASSOCIATED WOMEN  
[associated.org/jwgf](http://associated.org/jwgf)

JWGF provides women with an opportunity to create social change for women and girls through a collaborative grant making process. JWGF members pool their resources to make grants in the Jewish and secular community, both locally and overseas, while learning about our community's most pressing needs and discovering their power as leaders in women's philanthropy.

### JUMP START FOR WOMEN JEWISH COMMUNITY SERVICES (JCS)

[jcsbaltimore.org/jump-start-women](http://jcsbaltimore.org/jump-start-women)

Women who are entering or reentering the workforce can face unique challenges and barriers, especially if they have limited experience. The JCS Career Center offers Jump Start for Women, a job readiness program that combines a customized curriculum-based classroom component with one-on-one career coaching and job placement assistance.

### SERVICES ADDRESSING WOMEN'S ISSUES

JEWISH COMMUNITY SERVICES (JCS)

[jcsbaltimore.org](http://jcsbaltimore.org)



JCS offers an array of programs and services that address challenges and issues faced by women today including caregiving, parenting, postpartum depression, career advancement, work-life balance, body image and more.



# Networking with Jewish Professional Women (JPW)

Amazing energy and connections. New perspectives on work, life and personal growth. Jewish Professional Women provides opportunities for career-minded women to network, socialize and learn together.

#### A FEW OF OUR JPW WOMEN GIVE US SOME INSIGHTS ON LEADING A SUCCESSFUL PROFESSIONAL LIFE:

**On advice to her younger self:**

"Know that everyone in your industry started out at the beginning. Those you look up to the most were just like you at one point and time. Try to learn from those who came before you and recognize that you cannot be an expert on day one."

- LAURIE WASSERMAN

**On work/life balance:**

"My tip is to put down your device (phone, tablet, computer, etc.) and do something fun."

- ELISSA KOHEL

**On career challenges:**

"My greatest challenge thus far was learning how to be a great manager. I went to seminars and took feedback from my superiors ... I learned being an active listener is key."

- HINDY LEEDER

# Ways to Give

Why do we give? We give because we must, because we can and because we have received. We give our money, our talent and our time. We give because we value Jewish experiences and have hope for tomorrow.



### LEAVE A LEGACY

[associated.org/philanthropicplanning](http://associated.org/philanthropicplanning)

You give generously now to help make this community a wonderful place to live. Leaving a legacy ensures your grandchildren and succeeding generations will live in a community supported by your enduring gift that reflects your values. There are many ways to leave a legacy. You can: make a bequest in your will; name The Associated as the beneficiary of your IRA or retirement plan; establish a charitable income plan; make an outright gift of cash, stock or other property; or use life insurance.

### ASSOCIATED FUNDRAISING VOLUNTEERS



410-727-4828

The Associated is looking for volunteers who are passionate about doing good in the community to help raise funds for its Annual Campaign. Join a team of dedicated men and women who care about the well-being of the Jewish community, locally and globally.

### DONATE

[associated.org/give](http://associated.org/give)

Do you care about the well-being of our Jewish community? If so, consider making a gift to The Associated. Your one gift —large or small— touches far more lives, far more profoundly than you might imagine. Maximize your donation by asking about your company's matching gifts program.

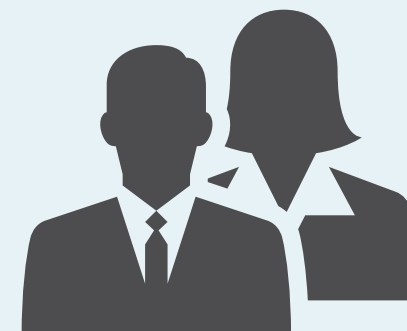


### CORPORATE SPONSORS PROGRAM

[associated.org/corporatepartners](http://associated.org/corporatepartners)

Through The Associated's Corporate Sponsors Program, your company can reach one of the most affluent and influential consumer markets in Baltimore, while providing for the social service, health and welfare needs of thousands of people in Baltimore.

With a corporate partnership investment, your business will realize significant exposure, recognition and publicity through multimedia marketing awareness-raising campaigns and receive benefits such as opportunities to attend special events and VIP receptions. Whether your company is interested in reaching a community-wide audience, a specific market or supporting a particular community issue, The Associated's Corporate Sponsors Program offers a variety of partnership packages that can be tailored to meet your company's needs.



### UNITED WAY

[associated.org/professionals](http://associated.org/professionals)

Clocking out of the office and tuning into the needs of our community. Elevating your everyday work into a mission. In the office and out, you're an important part of the picture. Do your part to help The Associated provide a healthy, vibrant and strong Jewish community in Baltimore. If your company runs a United Way Workplace Campaign, designate your United Way gift to The Associated.



# Spend your Weekend in Jewish Baltimore

## COMMUNITY CONNECTOR PROJECT

MACKS CENTER FOR JEWISH EDUCATION (CJE)

[cjobaltimore.org/cjeconnectors](http://cjobaltimore.org/cjeconnectors)

The Community Connector Project services those in the community searching for meaningful, relevant programming in their neighborhood. The community connectors will take you out for coffee, schmooze and discuss what you are looking for as a Jewish person and/or family and will connect you to those interests.

## SHALOM BALTIMORE

JEWISH COMMUNITY CENTER (JCC)

[shalombaltimore.org](http://shalombaltimore.org)

Shalom Baltimore welcomes individuals who are new to Baltimore's Jewish community. Newcomers are matched with a volunteer who meets them in person and delivers a welcome basket with gifts and community information.

## THE GORDON CENTER FOR PERFORMING ARTS

[gordoncenter.com](http://gordoncenter.com)

The Gordon Center is a professional, state-of-the-art entertainment venue that showcases amazing and eclectic performances. Located on the campus of the Rosenbloom Owings Mills JCC, the Gordon is the premier performing arts center in Baltimore County. The season features local, national and international touring artists in music, dance, comedy, lectures, family shows and films.

## JEWISH MUSEUM OF MARYLAND AT THE HERBERT BEARMAN CAMPUS (JMM)

[jewishmuseummd.org](http://jewishmuseummd.org)

The Jewish Museum of Maryland, located blocks from the Inner Harbor, offers visitors a chance to uncover Jewish history. Tour the Lloyd Street Synagogue, the nation's third oldest surviving synagogue, visit "Voices of Lombard Street," which explores Baltimore's rich immigrant history in East Baltimore, enjoy traveling exhibits that explore the Jewish American experience and participate in a wide range of cultural and academic events for children, adults and families.

## DOWNTOWN BALTIMORE JEWISH COMMUNITY CENTER (DBJCC)

JEWISH COMMUNITY CENTER (JCC)  
[dbjcc.com](http://dbjcc.com)

DBJCC helps families with young children enjoy life downtown. There is a drop-in play space for kids to enjoy as well as a downtown version of the popular Tot Shabbat and a variety of Baby and Me classes. Programs are open to Jewish and non-Jewish families with focus on early child development, parent education, neighborhood networking and more. Downtown families can also gather at the DBJCC to welcome Shabbat with light appetizers, drinks, challah and Shabbat blessings.

Jewish Baltimore is the place we call home. Uptown, downtown and everywhere in between, you're all part of the picture. Check out these organizations that make our community connected, enriching, fun and full of Jewish life.



## The Connectors

"We create a place of belonging," says Carly Greenberg, a Community Connector through the Louise D. and Morton J. Macks Center for Jewish Education (CJE). For young families building their Jewish future, that means learning with others at the same stage – a key goal of the CJE Connector program. With a phone call, conversation or activity, people connect to people and learn about Jewish Baltimore along the way.

Enter creative, family-friendly fun – with a dash or more of Jewish. During Family Winter Fun Days in December, Carly and Jessica Fink organized a tumble of activities: a singer, puppet show, story time and a craft. "We worked with Jewish Volunteer Connection (JVC) to teach children how to make noisemakers and then create kits for children in area hospitals," said Carly. That teachable moment introduced the concept of *tzedakah* to little ones.

Jessica launched the Fantasy Football Jewish Mom League with a draft party. During the season, the lively group grew to 18 women who met weekly to cheer on the players while learning about Jewish Baltimore. While they came for football, they left with firsthand knowledge about PJ Library, CJE, Associated agencies and volunteering in the community, says Jessica.

To meet the needs of uptown and downtown families and work schedules, Jessica and Carly vary event locations and times. Mothers painted hamsahs during a Mom's Night Out at a Mt. Washington studio. Similarly, a downtown Challah Bake sold out. "Our goal is to bring new people in, connect Jewish families and let people know what's available at every age," says Jessica.

Connectors benefit, too. Born just two years ago, the CJE Connector program features an 11-month course that gives would-be connectors opportunities to meet others, grow leadership skills and dive deeply into Jewish Baltimore. "Our connectors are also taking that Jewish journey and asking themselves, 'What kind of Jewish life do I want for my family?'" says Lisa Bodziner, director, CJE educational engagement.

# Agencies & Programs

Our service agencies and programs, whose opportunities fill these pages, make our community tick – handling everything from housing assistance to professional development, from special needs programming to senior living, from recreational activities to educational enrichment. We wouldn't be the robust, uplifting community that we are without their tireless efforts.

- **BALTIMORE HEBREW INSTITUTE AT TOWSON UNIVERSITY**  
410.704.7117  
towson.edu/bhi
- **BALTIMORE JEWISH COUNCIL**  
410.542.4850  
baltjc.org
- **CHAI: COMPREHENSIVE HOUSING ASSISTANCE, INC.**  
410.500.5300  
chaibaltimore.org
- **CHANA**  
410.234.0030  
chanabaltimore.org
- **COUNCIL ON JEWISH DAY SCHOOL EDUCATION**  
410.735.5000
- **THE DARRELL D. FRIEDMAN INSTITUTE FOR PROFESSIONAL DEVELOPMENT AT THE WEINBERG CENTER**  
410.843.7560  
thedfi.org
- **EDWARD A. MYERBERG CENTER**  
410.358.6856  
myerberg.org
- **HEBREW BURIAL AND SOCIAL SERVICES SOCIETY**  
410.653.8900
- **HEBREW FREE LOAN ASSOCIATION**  
410.843.7536  
hebrewfreeloan.org
- **HILLEL-GOUCHER COLLEGE**  
410.337.6545  
goucher.edu/hillel

- **HILLEL-JOHNS HOPKINS UNIVERSITY**  
410.516.0333  
hopkinshillel.org
- **HILLEL-TOWSON UNIVERSITY**  
410.704.4671  
towson.hillel.org
- **HILLEL-UNIVERSITY OF MARYLAND BALTIMORE COUNTY**  
410.455.1329  
umbchillel.org
- **HILLEL-UNIVERSITY OF MARYLAND COLLEGE PARK**  
301.422.6200  
hillelmd.org
- **JEWISH CEMETERY ASSOCIATION**  
410.486.8666
- JEWISH COMMUNITY CENTER OF GREATER BALTIMORE**
- **DOWNTOWN JCC**  
410.559.3618  
dbjcc.org
- **ROSENBLOOM OWINGS MILLS**  
410.356.5200  
jcc.org
- **WEINBERG PARK HEIGHTS**  
410.542.4900  
jcc.org
- **JEWISH COMMUNITY SERVICES**  
410.466.9200  
jcsbaltimore.org

- **JEWISH MUSEUM OF MARYLAND AT THE HERBERT BEARMAN CAMPUS**  
410.732.6400  
jewishmuseummd.org
- **JEWISH VOLUNTEER CONNECTION**  
410.843.7490  
jvcbaltimore.org
- **LEVINDALE HEBREW GERIATRIC CENTER AND HOSPITAL\***  
410.601.2400  
levindale.com
- **THE LOUISE D. & MORTON J. MACKS CENTER FOR JEWISH EDUCATION**  
410.735.5000  
cjebaltimore.org
- **MARYLAND/ISRAEL DEVELOPMENT CENTER**  
410.767.0681  
marylandisrael.org
- **PEARLSTONE CENTER**  
410.429.4400  
pearlstonecenter.org
- **SHEMESH**  
410.843.7524  
shemeshbaltimore.org
- **SINAI HOSPITAL OF BALTIMORE\***  
410.601.9000  
lifebridgehealth.org

- NATIONAL AND INTERNATIONAL PARTNERS**
- American Jewish Joint Distribution Committee**  
jdc.org
- JEWISH AGENCY FOR ISRAEL**  
jewishagency.org
- JEWISH FEDERATIONS OF NORTH AMERICA**  
212.284.6500  
jewishfederations.org
- WORLD ORT**  
212.519.9839  
ort.org

*\* Levindale Hebrew Geriatric Center and Hospital and Sinai Hospital are constituent partner agencies that do not receive an allocation from The Associated Annual Campaign; however, they do receive funding from endowments managed by The Associated.*



The Associated: Jewish Community Federation of Baltimore  
101 W. Mount Royal Avenue \\  
Baltimore, Maryland 21201



[associated.org/getinvolved](https://associated.org/getinvolved)

410-727-4828